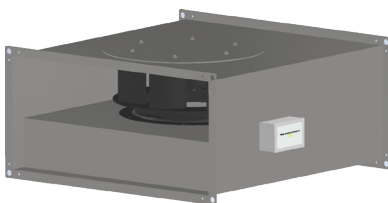
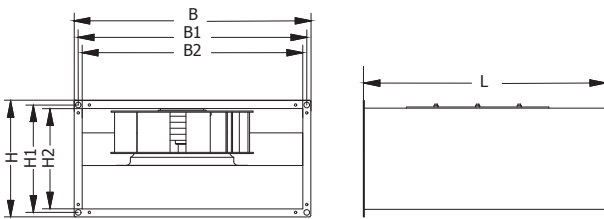


**RECTANGULAR DUCT TYPE FANS (0-10V With Pressure Sensor)**

# VKPF - C SERIES



### Technical details;



\*Galvanised sheet steel support base

\*Backward-curved impeller. Made of galvanised sheet steel.

\*The fans are rated for exhaust ventilation and air conditioning systems for various premises that require reasonable energy saving solutions and controlled ventilation systems.

\* AC motors with P.I.D controll, provides significant savings in electricity consumption

\*Single-phase 230V-50Hz.

\*These components are replaced by a maintenance-free electronic circuit board. AC motors are featured with high performance and well controllable speed range. Premium efficiency reaching 90 % is a definite advantage of electronically commutated motors.

\*Entegrated pressuare differentiated sensor provides automatic speed controller.

MODELS	DIMENSIONS (mm)						
	B	B1	B2	H	H1	H2	L
VKPF-C 400X250	400	425	450	250	275	300	525
VKPF-C 425X275	425	450	475	275	300	325	575
VKPF-C 450X275	450	475	500	275	300	325	600
VKPF-C 450X300	450	475	500	300	325	350	625
VKPF-C 500X300	500	525	550	300	325	350	700
VKPF-C 600X350	600	625	650	350	375	400	800
VKPF-C 650X400	650	675	700	400	425	450	850
VKPF-C 800X600	800	825	850	600	625	650	900

MODEL	PRODUCT CODE	Airflow (m <sup>3</sup> /h)	PWR (KW)	Sound (dBA)	Current (AMP)	Rotation (RPM)	VOLTAGE (V)	Weight (KG)
VKPF-C 400X250	43001	500	80	52	0.04	2400	230	19
VKPF-C 425X275	43002	1000	100	54	0.05	2650	230	19
VKPF-C 450X275	43003	1400	155	54	0.72	2600	230	19
VKPF-C 450X300	43004	1850	200	55	0.89	2600	230	20
VKPF-C 500X300	43005	3100	200	55	0.82	1650	230	27
VKPF-C 600X350	43006	4300	275	60	1.39	1650	230	29
VKPF-C 650X400	43007	5750	390	62	1.97	1600	230	36
VKPF-C 800X600	43008	8200	780	64	3.50	1280	230	55