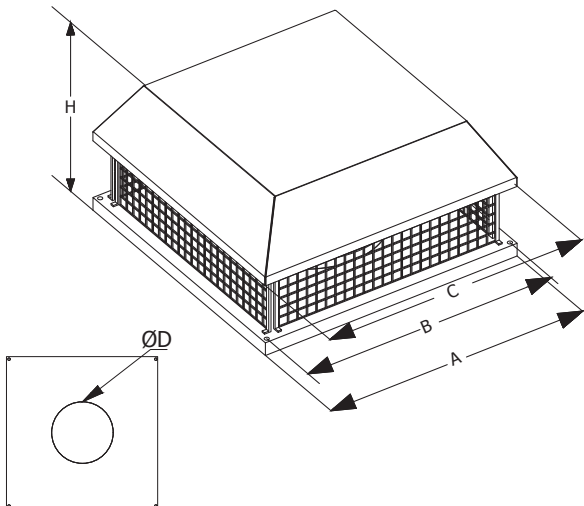


RADIAL TYPE ROOF FAN (0-10V With Pressure Sensor Assembly)

VKH-C SERIES



Technical details;



*Galvanised sheet steel support base.

*Horizontal air outlet and galvanized rain cap .

*Backward-curved impeller. made of galvanized sheet steel.

*The fans are rated for exhaust ventilation and air conditioning systems for various premises that require reasonable energy saving solutions and controlled ventilation systems

*With AC motors, provides significant savings in electricity consumption

*Bird control grille.

*Single-phase 230V-50Hz.

*These components are replaced by a maintenance-free electronic circuit board. AC motors are featured with high performance and well controllable speed range Premium efficiency reaching 90 % is a define advantage of electronically commutated motors.

*Entegrated pressuare differentiated sensor provides automatic speed controller.

MODELS	DIMENSIONS (mm)				
	ØD	H	A	B	C
VKH-C 190	125	250	350	300	400
VKH-C 225	146	280	350	300	400
VKH-C 250	162	280	400	350	450
VKH-C 280	182	300	400	350	450
VKH-C 355	239	320	540	490	590
VKH-C 400	256	370	560	510	610
VKH-C 450	288	400	620	570	670
VKH-C 500	324	480	670	620	720

MODEL	PRODUCT CODE	Airflow (m³/h)	PWR (KW)	Sound (dBA)	Current (AMP)	Rotation (RPM)	VOLTAGE (V)	Weight (KG)
VKH-C 190	37001	500	80	52	0,04	2400	230	10
VKH-C 225	37002	1000	100	54	0,05	2650	230	11
VKH-C 250	37003	1400	155	54	0,72	2600	230	13
VKH-C 280	37004	1850	200	55	0,89	2600	230	17
VKH-C 355	37005	3100	200	55	0,82	1650	230	21
VKH-C 400	37006	4300	275	60	1,39	1650	230	26
VKH-C 450	37007	5750	390	62	1,97	1600	230	33
VKH-C 500	37008	8200	780	64	3,50	1280	230	43