

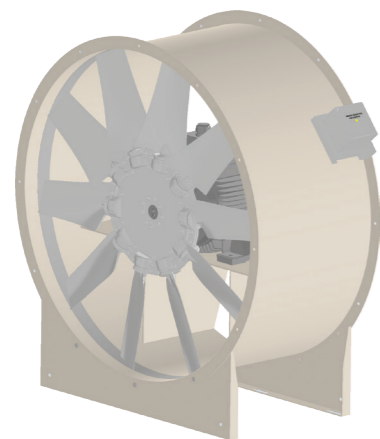
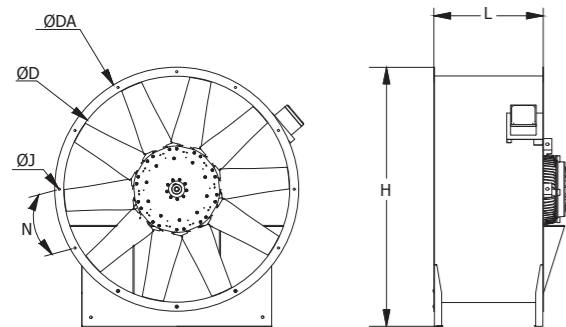
AXIAL TYPE EXPLOSION PROOF FAN

AIR HCT SERIES



- *Impeller with adjustable pitch angle for maximum efficiency aluminum hub and blades.
- *Aluminium anti-spark ring.
- *Resistant to electrostatic powder coated corrosion.
- *The motor is speed controllable by frequency converter.
- * Products are fully ATEX certified.
- * Standard production class is EX IIG IIC T4.
- * Usage; suitable for installation in ducts. Suitable for outdoor use.

Technical details;



| MODELS | DIMENSIONS (mm) | | | | | |
|------------------|-----------------|------|-----|------|----|----------|
| | ØD | ØDA | L | H | ØJ | N |
| AIR HCT 31-2-4T | 315 | 415 | 330 | 505 | 14 | 8x45° |
| AIR HCT 35-2-4T | 355 | 455 | 330 | 545 | 14 | 8x45° |
| AIR HCT 40-2-4T | 400 | 500 | 330 | 590 | 14 | 8x45° |
| AIR HCT 45-2-4T | 450 | 550 | 330 | 640 | 14 | 8x45° |
| AIR HCT 63-2-4T | 630 | 730 | 500 | 820 | 14 | 12x30° |
| AIR HCT 71-2-4T | 710 | 810 | 500 | 900 | 14 | 12x30° |
| AIR HCT 80-2-4T | 800 | 900 | 500 | 990 | 14 | 12x30° |
| AIR HCT 90-2-4T | 900 | 1000 | 600 | 1090 | 14 | 16x22,5° |
| AIR HCT 100-2-4T | 1000 | 1100 | 600 | 1190 | 14 | 16x22,5° |
| AIR HCT 112-2-4T | 1120 | 1220 | 600 | 1310 | 14 | 16x22,5° |

| MODEL | PRODUCT CODE | Airflow (m³/h) | PWR (KW) | Sound (dBA) | Current (AMP) | Rotation (RPM) | VOLTAGE (V) | Weight (KG) |
|--------------------|--------------|----------------|----------|-------------|---------------|----------------|-------------|-------------|
| AIR HCT 31-2T-0,18 | 15001 | 3157 | 0,18 | 85 | 0,65 | 2785 | 380 | 20 |
| AIR HCT 31-2T-0,25 | 15002 | 3740 | 0,25 | 86 | 0,70 | 2755 | 380 | 21 |
| AIR HCT 35-2T-0,37 | 15003 | 4664 | 0,37 | 83 | 1,10 | 2760 | 380 | 23 |
| AIR HCT 40-2T-0,55 | 15004 | 5962 | 0,55 | 91 | 1,45 | 2760 | 380 | 27 |
| AIR HCT 40-2T-0,75 | 15005 | 7315 | 0,75 | 88 | 1,85 | 2800 | 380 | 30 |
| AIR HCT 45-2T-0,75 | 15006 | 8459 | 0,75 | 95 | 1,85 | 2800 | 380 | 32 |
| AIR HCT 45-2T-1,1 | 15007 | 12100 | 1,10 | 92 | 2,60 | 2790 | 380 | 33 |
| AIR HCT 45-2T-1,5 | 15008 | 12100 | 1,50 | 91 | 3,25 | 2865 | 380 | 36 |
| AIR HCT 45-2T-2,2 | 15009 | 14740 | 2,20 | 94 | 4,75 | 2875 | 380 | 38 |
| AIR HCT 63-2T-2,2 | 15010 | 19800 | 2,20 | 97 | 4,75 | 2875 | 380 | 50 |
| AIR HCT 63-2T-3 | 15011 | 22000 | 3,00 | 96 | 6,45 | 2875 | 380 | 57 |
| AIR HCT 63-2T-4 | 15012 | 26070 | 4,00 | 96 | 7,50 | 2865 | 380 | 64 |
| AIR HCT 71-2T-5,5 | 15013 | 33880 | 5,50 | 99 | 9,80 | 2890 | 380 | 70 |
| AIR HCT 71-2T-7,5 | 15014 | 39270 | 7,50 | 100 | 13,60 | 2910 | 380 | 74 |
| AIR HCT 71-2T-11 | 15015 | 45650 | 11,00 | 101 | 19,50 | 2945 | 380 | 80 |
| AIR HCT 35-4T-0,12 | 15016 | 3729 | 0,12 | 71 | 0,65 | 1380 | 380 | 21 |
| AIR HCT 40-4T-0,18 | 15017 | 5181 | 0,18 | 73 | 0,75 | 1330 | 380 | 24 |
| AIR HCT 40-4T-0,25 | 15018 | 5544 | 0,25 | 76 | 1,05 | 1320 | 380 | 25 |
| AIR HCT 45-4T-0,37 | 15019 | 7766 | 0,37 | 80 | 1,35 | 1425 | 380 | 29 |
| AIR HCT 45-4T-0,55 | 15020 | 8822 | 0,55 | 79 | 1,50 | 1690 | 380 | 31 |
| AIR HCT 63-4T-1,1 | 15021 | 15290 | 1,10 | 85 | 2,80 | 1705 | 380 | 50 |
| AIR HCT 63-4T-1,5 | 15022 | 20350 | 1,50 | 86 | 3,55 | 1700 | 380 | 52 |
| AIR HCT 63-4T-2,2 | 15023 | 22990 | 2,20 | 89 | 4,90 | 1715 | 380 | 59 |
| AIR HCT 71-4T-3 | 15024 | 29590 | 3,00 | 91 | 7,70 | 1710 | 380 | 68 |
| AIR HCT 71-4T-4 | 15025 | 32340 | 4,00 | 93 | 8,50 | 1735 | 380 | 72 |
| AIR HCT 80-4T-3 | 15026 | 35200 | 3,00 | 91 | 6,60 | 1435 | 380 | 76 |
| AIR HCT 80-4T-4 | 15027 | 40040 | 4,00 | 93 | 8,20 | 1455 | 380 | 80 |
| AIR HCT 80-4T-5,5 | 15028 | 43120 | 5,50 | 95 | 11,20 | 1465 | 380 | 92 |
| AIR HCT 90-4T-3 | 15029 | 38500 | 3,00 | 96 | 6,60 | 1435 | 380 | 94 |
| AIR HCT 90-4T-4 | 15030 | 45320 | 4,00 | 96 | 8,20 | 1455 | 380 | 98 |
| AIR HCT 90-4T-5,5 | 15031 | 47410 | 5,50 | 95 | 11,20 | 1465 | 380 | 110 |
| AIR HCT 90-4T-7,5 | 15032 | 55110 | 7,50 | 101 | 15,40 | 1465 | 380 | 120 |
| AIR HCT 100-4T-5,5 | 15033 | 55330 | 5,50 | 97 | 11,20 | 1465 | 380 | 118 |
| AIR HCT 100-4T-7,5 | 15034 | 62480 | 7,50 | 99 | 15,40 | 1465 | 380 | 128 |
| AIR HCT 112-4T-5,5 | 15035 | 59070 | 5,50 | 102 | 11,20 | 1465 | 380 | 127 |
| AIR HCT 112-4T-7,5 | 15036 | 75680 | 7,50 | 100 | 15,40 | 1465 | 380 | 139 |