

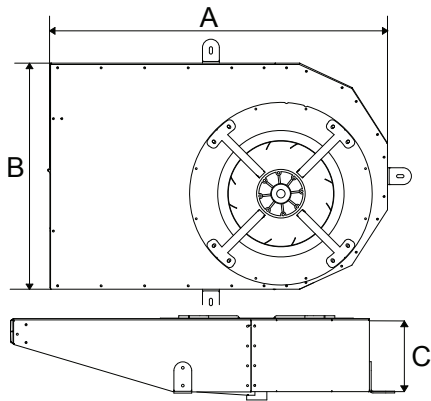
RADIAL TYPE OF JET FAN

AIR CI SERIES



- * Galvanized Sheet steel casing.
- * Backward-curved impeller in extremely robust sheet steel.
- * Anti-contact protective grille pursuant to standard UNE-EN ISO 12499.
- * Three-phase 230/400V-50Hz.
- * Standard double speed motor with Class H protection 300C/2H fire resistance.
- * Maximum temperature of air to be carried: S1 continuous operation -20°C +40°C. S2 operation 300°C/2h.

Technical details;



MODELS	DIMENSIONS (mm)		
	A	B	C
AIR CI 50-4/8T	1200	800	280
AIR CI 75-4/8T	1400	1000	300

MODEL	PRODUCT CODE	Airflow (m ³ /h)	PWR (KW)	THRUST (N)	Current (AMP)	Rotation (RPM)	VOLTAGE (V)	Weight (KG)
AIR CI 50-4/8T	81001	6.840/3.420	1,1/0,37	63 /28	2,6	1410	380	80
AIR CI 75-4/8T	81002	8.000/4.000	2,2/0,55	75 /19	5,0	1415	380	100