



PRODEK

PRODUCT CATALOGUE

www.prodeksan.com



PRODEK

Industrial Fan Systems

DUCT TYPE FANS



WK Series
Duct type Radial Fan

| Page | 4



TT Series
Mixed Flow Duct Fan

| Page | 5



VKPF Series
Rectangular Duct Fans With External Rotor Motor

| Page | 6



VKPF-C Series
Rectangular Duct Fans With P.I.D Control
(0-10V with pressure sensor)

| Page | 7



RKD Series
Rectangular Duct Fans Direct Drive

| Page | 8



RKS Series
Shelter Fresh Air Fan

| Page | 9

ROOF TYPE FANS



VKH Series
Radial Roof Fan With Horizontal Outlet

| Page | 10



VKH-C Series
Radial Type Roof Fan
(0-10V with pressure sensor assembly)

| Page | 11



VKV Series
Radial Type Roof Fan Vertical Outlet

| Page | 12



VKV-C Series
Radial Type Roof Fan With P.i.d Control
(0-10V With Pressure Sensor)

| Page | 13



Rcd-Y Series
Roof Fan With Horizontal Outlet

| Page | 14



RCD-D Series
Roof Fan With Vertical Outlet

| Page | 16

AXIAL FANS



AKD Series
Tubular Axial Fan

| Page | 18



AWD Series
Wall Type Axial Fan

| Page | 20



ACD-Y Series
Roof Mounted Axial Extractor Fan

| Page | 22



AHD Series
Axial Fan With Acoustically Insulated Box

| Page | 24

SMOKE EXTRACT FANS



AIR AKD Series
Axial Type Of Smoke Fans

| Page | 26



AIR AKD-W Series
Wall Type Axial Smoke Fans

| Page | 28



AIR AKD-R Series
Roof Type Axial Smoke Fans

| Page | 30



AIR AKD-H Series
Smoke Axial Fans With Acoustically Insulated Box

| Page | 32

JET FANS



AIR AJD Series
Axial Jet Fan

| Page | 34



AIR CI Series
Radial Type Of Jet

| Page | 35

CELL TYPE FANS



RHD Series
Centrifugal Fans With Acoustic Isolation

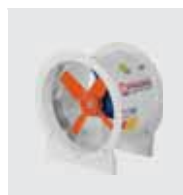
| Page | 36



RHD-SS Series
Cell Type Radial Shelter Fan

| Page | 38

EXPROOF FANS



AIR HCT Series
Axial Type Explosion Proof Fan

| Page | 40



AIR HC Series
Wall Type Axial Explosion Proof Fan

| Page | 42



AIR HCT-R Series
Roof Type Axial Explosion Proof Fan

| Page | 44

ACCESSORIES

| Page | 46

AUTOMATION SYSTEMS

| Page | 48

CFD SMOKE ANALYSIS

| Page | 49

ELECTRICAL CONNECTION DIAGRAMS

| Page | 50-54

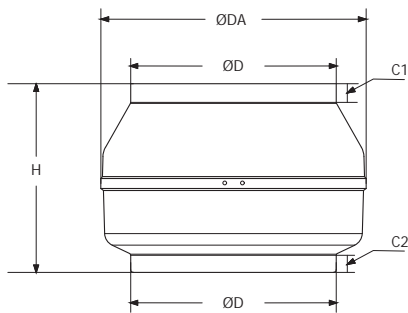
DUCT TYPE RADIAL FAN

WK SERIES



- *Radial type of impeller with backward curve.
- *All series are single phase motor 230 V. Built-in motor protection.
- *Can be installed in any position
- *Can be installed outdoors
- *Maintenance-free and reliable
- *The WK series is designed for installation in ducts. To simplify the installation the WK-fan has a fixing bracket together with screws for mounting the bracket included as standard.
- *The fans have backward-curved blades and external rotor motors.
- *The casing is manufactured from galvanised sheet steel.
- *The WK fans is resistant to corrosion.

Technical details;



MODEL	PRODUCT CODE	Airflow (m ³ /h)	PWR (W)	Sound (dBA)	Current (AMP)	Rotation (RPM)	VOLTAGE (V)	Weight (KG)
WK 100	13001	320	60	44	0,30	2610	230	3
WK 125	13002	450	80	43	0,40	2325	230	2,7
WK 150	13003	600	78	46	0,40	2450	230	3
WK 200	13004	1200	100	48	0,51	2530	230	4,8
WK 250	13005	1800	145	47	0,74	2650	230	5,3
WK 315	13006	2290	180	49	0,87	2500	230	6,9



MODELS	DIMENSIONS(mm)				
	ØDA	ØD	C1	C2	H
WK 100	245	97	20	20	197
WK 125	245	122	20	20	188
WK 150	272	147	23	25	192
WK 200	330	196	30	28	230
WK 250	330	247	30	28	227
WK 315	400	313	30	30	285

INLINE MIXED FLOW FAN

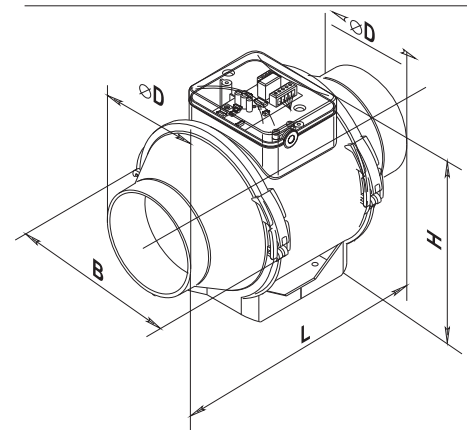
TT SERIES



- * Duct type mixed flow fans with ABS plastic body and impeller.
- * All series are single phase motor 230 V. With double speed motor.
- * Can be installed in any position
- * Maintenance-free and reliable
- * The TT series is designed for installation in ducts. The casing is manufactured from PP fibreglass reinforced plastic which gives the fan a less leakage casing.
- * The fans have backward-curved blades and external rotor motors.
- * Low sound level.

MODEL	PRODUCT CODE	Airflow (m ³ /h)	PWR (W)	Sound (dBA)	Current (AMP)	Rotation (RPM)	VOLTAGE (V)	Weight (KG)
TT 100	14001	190	33	36 /27	0,21	2500	230	1,45
TT PRO 100	14002	245	25	32 /27	0,11	2500	230	1,75
TT 125	14003	280	37	37 /28	0,27	2500	230	1,35
TT PRO 125	14004	350	30	34 /28	0,13	2500	230	2,15
TT 150	14005	550	30	44 /33	0,27	2500	230	2,65
TT PRO 200	14006	1040	108	52 /45	0,48	2500	230	3,95
TT PRO 250	14007	1400	117	55 /47	0,79	2500	230	7,80
TT PRO 315	14008	2350	320	58 /49	1,42	2500	230	11,95

Technical details;



MODELS	DIMENSIONS(mm)			
	ØD	B	H	L
TT 100	96	167	190	246
TT PRO 100	97	196	26	303
TT 125	123	167	190	246
TT PRO 125	123	196	226	286
TT 150	146	223	250	295
TT PRO 200	199	239	261	296
TT PRO 250	247	287	323	383
TT PRO 315	310	362	408	445



RECTANGULAR DUCT TYPE FANS

VKPF SERIES



*The case is made of self-supporting galvanized sheet metal frame construction with high impact resistant.

* Centrifugal impeller with frequent , backward curved blades

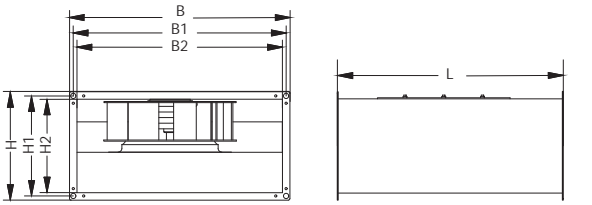
* Resistant to corrosion.

* EC motor option is also available.

* 230V products have speed control option.
380V products are suitable for frequency invertors.

* Suitable for outdoor use.

Technical details;



MODELS	DIMENSIONS (mm)						
	B	B1	B2	H	H1	H2	L
VKPF 4E 400X250	400	425	450	250	275	300	525
VKPF 4E 425X275	425	450	475	275	300	325	575
VKPF 4E 450X275	450	475	500	275	300	325	600
VKPF 4E 450X300	450	475	500	300	325	350	625
VKPF 4E 500X300	500	525	550	300	325	350	700
VKPF 4E 600X350	600	625	650	350	375	400	800
VKPF 4E 650X400	650	675	700	400	425	450	850
VKPF 4E 800X600	800	825	850	600	625	650	900
VKPF 4D 900X650	900	925	950	650	675	700	950

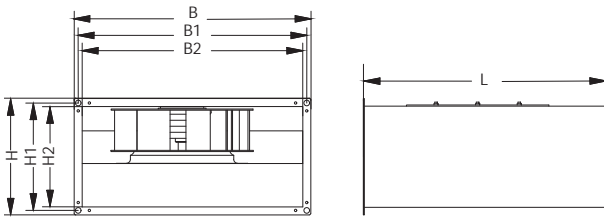
MODEL	PRODUCT CODE	Airflow (m ³ /h)	PWR (W)	Sound (dBA)	Current (AMP)	Rotation (RPM)	VOLTAGE (V)	Weight (KG)
VKPF 4E 400X250	41001	500	80	52	0.04	2400	230	19
VKPF 4E 425X275	41002	1000	100	54	0.05	2650	230	19
VKPF 4E 450X275	41003	1400	155	54	0.72	2600	230	19
VKPF 4E 450X300	41004	1850	200	55	0.89	2600	230	20
VKPF 4E 500X300	41005	3100	200	55	0.82	1650	230	27
VKPF 4E 600X350	41006	4300	275	60	1.39	1650	230	29
VKPF 4E 650X400	41007	5750	390	62	1.97	1600	230	36
VKPF 4E 800X600	41008	8200	780	64	3.50	1280	230	55
VKPF 4D 900X650	41009	11000	1150	66	2.30	1350	380	66

RECTANGULAR DUCT TYPE FANS (0-10V With Pressure Sensor)

VKPF - C SERIES



Technical details;



*Galvanised sheet steel support base

*Backward-curved impeller. Made of galvanised sheet steel.

*The fans are rated for exhaust ventilation and air conditioning systems for various premises that require reasonable energy saving solutions and controlled ventilation systems.

* AC motors with P.I.D controll, provides significant savings in electricity consumption

*Single-phase 230V-50Hz.

*These components are replaced by a maintenance-free electronic circuit board. AC motors are featured with high performance and well controllable speed range. Premium efficiency reaching 90 % is a definite advantage of electronically commutated motors.

*Entegrated pressuare differentiated sensor provides automatic speed controller.

MODELS	DIMENSIONS (mm)						
	B	B1	B2	H	H1	H2	L
VKPF-C 400X250	400	425	450	250	275	300	525
VKPF-C 425X275	425	450	475	275	300	325	575
VKPF-C 450X275	450	475	500	275	300	325	600
VKPF-C 450X300	450	475	500	300	325	350	625
VKPF-C 500X300	500	525	550	300	325	350	700
VKPF-C 600X350	600	625	650	350	375	400	800
VKPF-C 650X400	650	675	700	400	425	450	850
VKPF-C 800X600	800	825	850	600	625	650	900

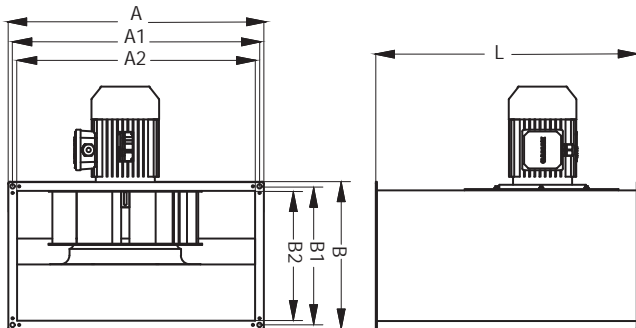
MODEL	PRODUCT CODE	Airflow (m ³ /h)	PWR (W)	Sound (dBA)	Current (AMP)	Rotation (RPM)	VOLTAGE (V)	Weight (KG)
VKPF-C 400X250	43001	500	80	52	0.04	2400	230	19
VKPF-C 425X275	43002	1000	100	54	0.05	2650	230	19
VKPF-C 450X275	43003	1400	155	54	0.72	2600	230	19
VKPF-C 450X300	43004	1850	200	55	0.89	2600	230	20
VKPF-C 500X300	43005	3100	200	55	0.82	1650	230	27
VKPF-C 600X350	43006	4300	275	60	1.39	1650	230	29
VKPF-C 650X400	43007	5750	390	62	1.97	1600	230	36
VKPF-C 800X600	43008	8200	780	64	3.50	1280	230	55

ENGINE OUTSIDE AIRFLOW PRISMATIK DUCT TYPE FAN

RKD SERIES



Technical details;



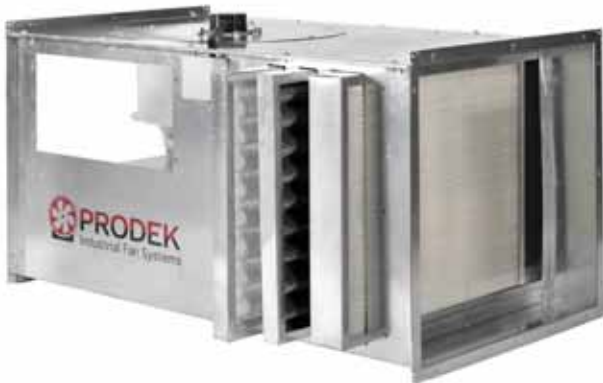
- *The case is made of self-supporting galvanized sheet metal frame construction with high impact resistant .
- *Horizontal directly , centrifugal impeller with backward curved blades.
- *Suitable for operating temperatures of up to 120 °C steady .
- The motors is out from the air stream, protection rating IP 44.
- *The motor is speed controllable by frequency converter.
- *Resistant coated corrosion.
- * Efficiency class is IE3. Three-phase 230/400 V 50 Hz

MODELS	DIMENSIONS (mm)						
	A	A1	A2	B	B1	B2	L
RKD 315-2T-1,1	650	625	600	450	425	400	600
RKD 355-2T-2,2	650	625	600	450	425	400	600
RKD 400-2T-4	650	625	600	450	425	400	600
RKD 450-2T-7,5	850	825	800	550	525	500	800
RKD 315-4T-0,37	650	625	600	450	425	400	600
RKD 355-4T-0,37	650	625	600	450	425	400	600
RKD 400-4T-0,55	650	625	600	450	425	400	700
RKD 450-4T-0,75	850	825	800	550	525	500	800
RKD 500-4T-1,5	950	925	900	650	625	600	900
RKD 560-4T-3	950	925	900	650	625	600	900
RKD 630-4T-5,5	950	925	900	650	625	600	950
RKD 710-4T-7,5	1150	1125	1100	750	725	700	1050
RKD 710-4T-11	1150	1125	1100	750	725	700	1050
RKD 800-4T-15	1250	1225	1200	850	825	800	1200
RKD 800-4T-18,5	1250	1225	1200	850	825	800	1200
RKD 900-4T-22	1350	1325	1300	850	825	800	1300
RKD 1000-4T-37	1450	1425	1400	950	925	900	1400

MODEL	PRODUCT CODE	Airflow (m³/h)	PWR (KW)	Sound (dBA)	Current (AMP)	Rotation (RPM)	VOLTAGE (V)	Weight (KG)
RKD 315-2T-1,1	42001	4500	1,10	96	2,3	2900	380	57
RKD 355-2T-2,2	42002	6980	2,20	97	4,5	2900	380	66
RKD 400-2T-4	42003	9800	4,00	100	7,9	2920	380	82
RKD 450-2T-7,5	42004	13800	7,50	98	13,6	2925	380	126
RKD 315-4T-0,37	42005	2450	0,37	82	1,2	1390	380	54
RKD 355-4T-0,37	42006	3650	0,37	81	1,2	1390	380	58
RKD 400-4T-0,55	42007	4550	0,55	84	1,6	1385	380	67
RKD 450-4T-0,75	42008	6600	0,75	82	1,7	1445	380	93
RKD 500-4T-1,5	42009	9180	1,50	86	3,5	1449	380	109
RKD 560-4T-3	42010	13300	3,00	95	6,2	1446	380	129
RKD 630-4T-5,5	42011	18000	5,50	98	10,6	1467	380	155
RKD 710-4T-7,5	42012	27200	7,50	102	15,2	1467	380	189
RKD 710-4T-11	42013	28150	11,00	101	21,0	1470	380	189
RKD 800-4T-15	42014	37900	15,00	102	30,9	1477	380	276
RKD 800-4T-18,5	42015	39350	18,50	103	39,5	1474	380	316
RKD 900-4T-22	42016	52300	22,00	105	41,6	1475	380	360
RKD 1000-4T-37	42017	71650	37,00	108	68,6	1475	380	440

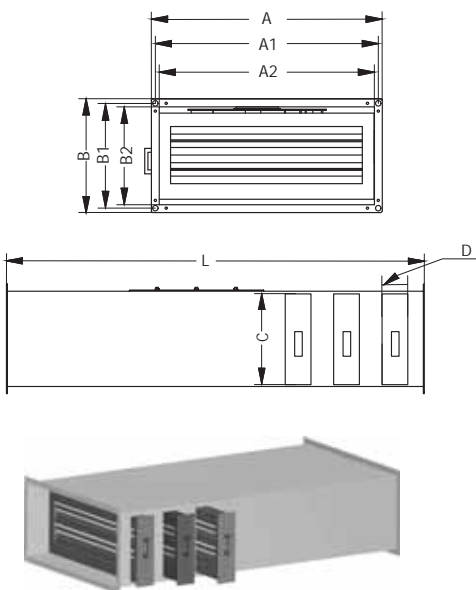
SHELTER FRESH AIR FAN

RKS SERIES



- *The case is made of self-supporting galvanized sheet metal frame construction with high impact resistant .
- * Fan casing is made of galvanized steel
- *Impellers with backward curved impeller blades made of galvanized steel are powered by means of the 2-or 4-pole asynchronous motors with external rotor.
- * It is suitable for duct type installation, it has monolithic body form in single walled cell.
- * Each impeller is dynamically balanced while assembly.
- Motor protection rating IP 44
- *Optional single phase 230 V/50 hz and three-phase 230/400V-50Hz.
- *Activated carbon filter , hepa filter , G4 filter included.

Technical details;



MODELS	DIMENSIONS (mm)								
	A	A1	A2	B	B1	B2	L	C	D
RKS 190	450	425	400	300	275	250	950	395	195
RKS 225	500	475	450	300	275	250	950	445	195
RKS 250	500	475	450	350	325	300	1000	445	245
RKS 280	500	475	450	350	325	300	1000	445	245
RKS 355	550	525	500	350	325	300	1100	495	245
RKS 400	650	625	600	400	375	350	1200	595	295
RKS 450	700	675	650	450	425	400	1300	645	345
RKS 500	850	825	800	650	625	600	1300	795	545
RKS 560	950	925	900	700	675	650	1400	895	595

MODEL	PRODUCT CODE	Airflow (m ³ /h)	PWR (W)	Sound (dBA)	Current (AMP)	Rotation (RPM)	VOLTAGE (V)	Weight (KG)
RKS 190	44001	500	80	52	0.04	2400	230	25
RKS 225	44002	1000	100	54	0.05	2650	230	27
RKS 250	44003	1400	155	54	0.72	2600	230	31
RKS 280	44004	1850	200	55	0.89	2600	230	32
RKS 355	44005	3100	200	55	0.82	1650	230	55
RKS 400	44006	4300	275	60	1.39	1650	230	61
RKS 450	44007	5750	390	62	1.97	1600	230	77
RKS 500	44008	8200	780	64	3.50	1280	230	116
RKS 560	44009	11000	1150	66	2.30	1350	380	138

RADIAL TYPE ROOF FAN

VKH SERIES



*The case is made of self-supporting galvanized sheet metal frame construction with high impact resistant .

* Centrifugal impeller with backward curved blades.

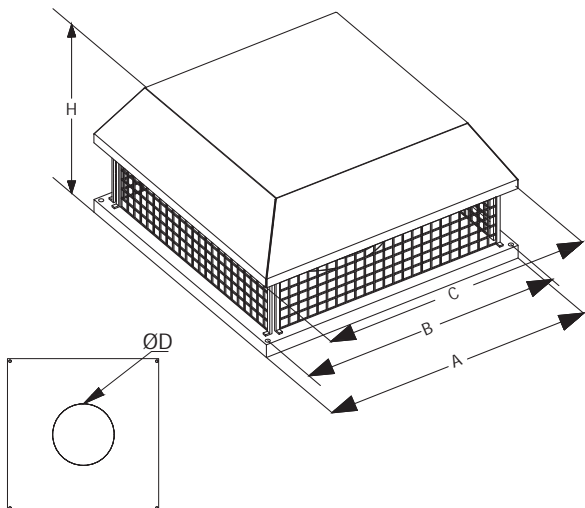
* EC motor option is also available.

* 230V products have speed control option.
380V products are suitable for frequency invertors.

*Suitable for outdoor use.

*Standard bird quard included.

Technical details;



MODELS	DIMENSIONS (mm)				
	ØD	H	A	B	C
VKH 190	125	250	350	300	400
VKH 225	146	280	350	300	400
VKH 250	162	280	400	350	450
VKH 280	182	390	400	350	450
VKH 355	239	320	540	490	590
VKH 400	256	370	560	510	610
VKH 450	288	400	620	570	670
VKH 500	324	480	670	620	720
VKH 560	388	520	700	650	750

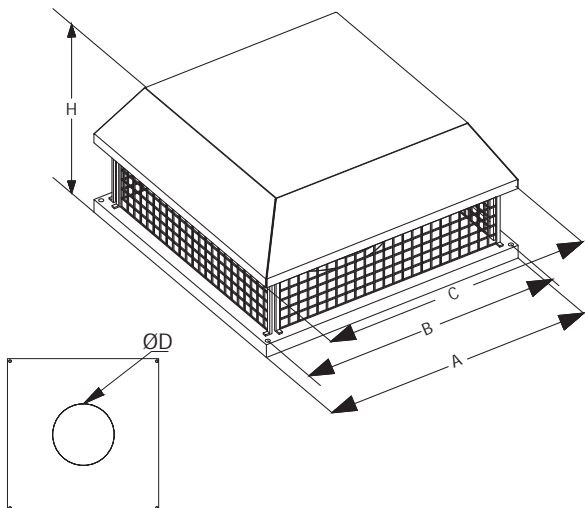
MODEL	PRODUCT CODE	Airflow (m³/h)	PWR (W)	Sound (dBA)	Current (AMP)	Rotation (RPM)	VOLTAGE (V)	Weight (KG)
VKH 190	31001	500	80	52	0.04	2400	230	10
VKH 225	31002	1000	100	54	0.05	2650	230	11
VKH 250	31003	1400	155	54	0.72	2600	230	13
VKH 280	31004	1850	200	55	0.89	2600	230	17
VKH 355	31005	3100	200	55	0.82	1650	230	21
VKH 400	31006	4300	275	60	1.39	1650	230	26
VKH 450	31007	5750	390	62	1.97	1600	230	33
VKH 500	31008	8200	780	64	3.50	1280	230	43
VKH 560	31009	11000	1150	66	2.30	1350	380	56

RADIAL TYPE ROOF FAN (0-10V With Pressure Sensor Assembly)

VKH-C SERIES



Technical details;



*Galvanised sheet steel support base.

*Horizontal air outlet and galvanized rain cap .

*Backward-curved impeller. made of galvanised sheet steel.

*The fans are rated for exhaust ventilation and air conditioning systems for various premises that require reasonable energy saving solutions and controlled ventilation systems

*With AC motors, provides significant savings in electricity consumption

*Bird control grille.

*Single-phase 230V-50Hz.

*These components are replaced by a maintenance-free electronic circuit board. AC motors are featured with high performance and well controllable speed range Premium efficiency reaching 90 % is a define advantage of electronically commutated motors.

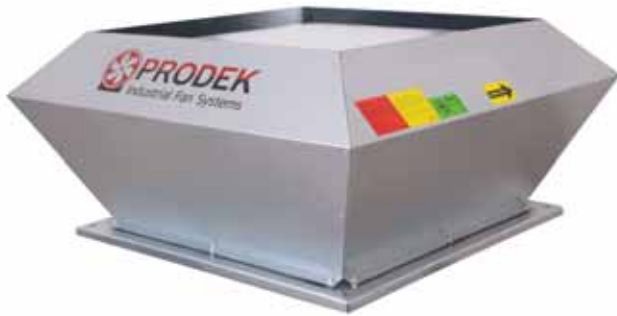
*Entegrated pressuare differentiated sensor provides automatic speed controller.

MODELS	DIMENSIONS (mm)				
	ØD	H	A	B	C
VKH-C 190	125	250	350	300	400
VKH-C 225	146	280	350	300	400
VKH-C 250	162	280	400	350	450
VKH-C 280	182	300	400	350	450
VKH-C 355	239	320	540	490	590
VKH-C 400	256	370	560	510	610
VKH-C 450	288	400	620	570	670
VKH-C 500	324	480	670	620	720

MODEL	PRODUCT CODE	Airflow (m³/h)	PWR (W)	Sound (dBA)	Current (AMP)	Rotation (RPM)	VOLTAGE (V)	Weight (KG)
VKH-C 190	37001	500	80	52	0,04	2400	230	10
VKH-C 225	37002	1000	100	54	0,05	2650	230	11
VKH-C 250	37003	1400	155	54	0,72	2600	230	13
VKH-C 280	37004	1850	200	55	0,89	2600	230	17
VKH-C 355	37005	3100	200	55	0,82	1650	230	21
VKH-C 400	37006	4300	275	60	1,39	1650	230	26
VKH-C 450	37007	5750	390	62	1,97	1600	230	33
VKH-C 500	37008	8200	780	64	3,50	1280	230	43

RADIAL TYPE ROOF FAN VERTICAL AIR OUTLET

VKV SERIES



*The case and impeller is made of self-supporting galvanized sheet metal frame construction with high impact resistant .

*Air stream vertical , centrifugal impeller with backward curved blades.

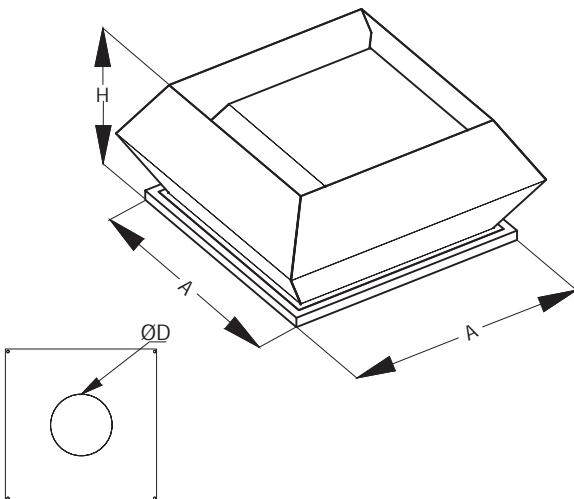
*Suitable for operating temperatures of up to 55 °C / steady .

*External rotor motor supports long term operations

*220v and 380v optional motor selections

*Resistant coated corrosion.

Technical details;

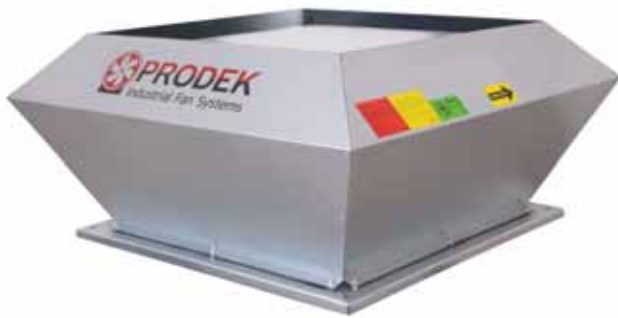


MODELS	DIMENSIONS (mm)		
	ØD	H	A
VKV 190	125	300	450
VKV 225	146	330	450
VKV 250	162	330	500
VKV 280	182	340	500
VKV 355	239	360	540
VKV 400	256	420	560
VKV 450	288	450	620
VKV 500	324	530	670
VKV 560	388	570	700

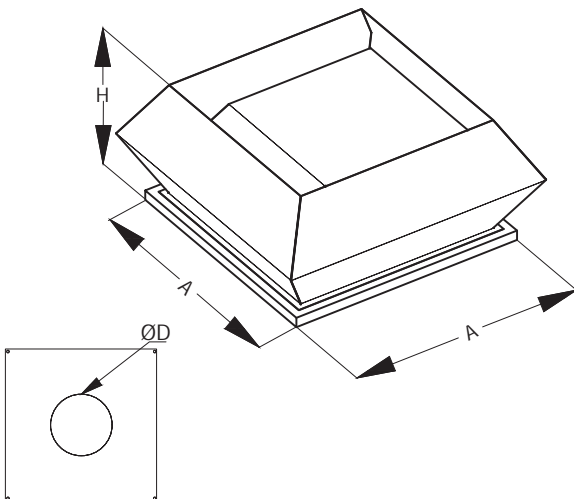
MODEL	PRODUCT CODE	Airflow (m³/h)	PWR (W)	Sound (dBA)	Current (AMP)	Rotation (RPM)	VOLTAGE (V)	Weight (KG)
VKV 190	38001	500	80	52	0.035	2400	230	15
VKV 225	38002	1000	100	54	0.046	2650	230	16
VKV 250	38003	1400	155	54	0.72	2600	230	18
VKV 280	38004	1850	200	55	0.89	2600	230	22
VKV 355	38005	3100	200	55	0.82	1650	230	26
VKV 400	38006	4300	275	60	1.39	1650	230	31
VKV 450	38007	5750	390	62	1.97	1600	230	38
VKV 500	38008	8200	780	64	3.5	1280	230	48
VKV 560	38009	11000	1150	66	2.3	1350	380	61

RADIAL TYPE ROOF FAN (0-10V With Pressure Sensor Assembly)

VKV-C SERIES



Technical details;



*Galvanised sheet steel support base *Verticle air outlet and galvanized rain cap.

*Backward-curved impeller. made of galvanised sheet steel.

*The fans are rated for exhaust ventilation and air conditioning systems for various premises that require reasonable energy saving solutions and controlled ventilation systems.

*With AC motors, provides significant savings in electricity consumption.

*Bird control grille. *Single-phase 230V-50Hz.

*These components are replaced by a maintenance-free electronic circuit board. AC motors are featured with high performance and well controllable speed range. Premium efficiency reaching 90 % is a define advantage of electronically commutated motors.

*Entegred pressure differentiated sensor provides automatic speed controller.

MODELS	DIMENSIONS (mm)		
	ØD	H	A
VKV-C 190	125	300	450
VKV-C 225	146	330	450
VKV-C 250	162	330	500
VKV-C 280	182	340	500
VKV-C 355	239	360	540
VKV-C 400	256	420	560
VKV-C 450	288	450	620
VKV-C 500	324	530	670

MODEL	PRODUCT CODE	Airflow (m ³ /h)	PWR (W)	Sound (dBA)	Current (AMP)	Rotation (RPM)	VOLTAGE (V)	Weight (KG)
VKV-C 190	39001	500	80	52	0.035	2400	230	15
VKV-C 225	39002	1000	100	54	0.046	2650	230	16
VKV-C 250	39003	1400	155	54	0.72	2600	230	18
VKV-C 280	39004	1850	200	55	0.89	2600	230	22
VKV-C 355	39005	3100	200	55	0.82	1650	230	26
VKV-C 400	39006	4300	275	60	1.39	1650	230	31
VKV-C 450	39007	5750	390	62	1.97	1600	230	38
VKV-C 500	39008	8200	780	64	3.5	1280	230	48

RCD- Y SERIES



*The case is made of self-supporting galvanized sheet metal frame construction with high impact resistant .

*Horizontal air stream with centrifugal impeller with backward curved blades.

*Suitable for operating temperatures of up to 120 °C steady .

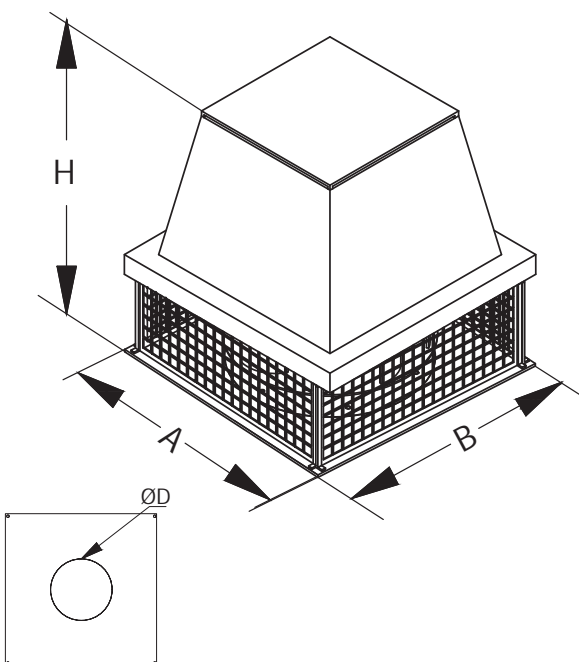
*The motors is out from the air stream, protection rating IP 44.

*The motor is speed controllable by frequency converter.

*Resistant coated corrosion.

*Efficiency class is IE3 ,Three-phase 230/400 V 50 Hz

Technical details;



MODELS	DIMENSIONS (mm)			
	ØD	A	B	H
RCD-Y 315-2T-1,1	200	400	400	420
RCD-Y 355-2T-2,2	230	480	480	600
RCD-Y 400-2T-4	255	600	600	700
RCD-Y 450-2T-7,5	290	600	600	950
RCD-Y 315-4T-0,37	200	400	400	370
RCD-Y 355-4T-0,37	230	480	480	580
RCD-Y 400-4T-0,55	255	600	600	700
RCD-Y 450-4T-0,75	290	600	600	700
RCD-Y 500-4T-1,5	325	700	700	850
RCD-Y 560-4T-3	365	700	700	950
RCD-Y 630-4T-5,5	410	820	820	1150
RCD-Y 710-4T-7,5	460	1100	1100	1400
RCD-Y 710-4T-11	460	1100	1100	1400
RCD-Y 800-4T-15	510	1200	1200	1400
RCD-Y 800-4T-18,5	510	1200	1200	1500
RCD-Y 900-4T-22	610	1300	1300	1500
RCD-Y 1000-4T-37	660	1400	1400	1600

MODEL	PRODUCT CODE	Airflow (m ³ /h)	PWR (KW)	Sound (dBA)	Current (AMP)	Rotation (RPM)	VOLTAGE (V)	Weight (KG)
RCD-Y 315-2T-1,1	35001	4500	1,10	96	2,3	2900	380	32
RCD-Y 355-2T-2,2	35002	6980	2,20	97	4,5	2900	380	50
RCD-Y 400-2T-4	35003	9800	4,00	100	7,9	2920	380	90
RCD-Y 450-2T-7,5	35004	13800	7,50	98	13,6	2925	380	132
RCD-Y 315-4T-0,37	35005	2450	0,37	82	1,2	1390	380	29
RCD-Y 355-4T-0,37	35006	3650	0,37	81	1,2	1390	380	42
RCD-Y 400-4T-0,55	35007	4550	0,55	84	1,6	1385	380	60
RCD-Y 450-4T-0,75	35008	6600	0,75	82	1,7	1445	380	76
RCD-Y 500-4T-1,5	35009	9180	1,50	86	3,5	1449	380	88
RCD-Y 560-4T-3	35010	13300	3,00	95	6,2	1446	380	105
RCD-Y 630-4T-5,5	35011	18000	5,50	98	10,6	1467	380	141
RCD-Y 710-4T-7,5	35012	27200	7,50	102	15,2	1467	380	158
RCD-Y 710-4T-11	35013	28150	11,00	101	21,0	1470	380	180
RCD-Y 800-4T-15	35014	37900	15,00	102	30,9	1477	380	220
RCD-Y 800-4T-18,5	35015	39350	18,50	103	39,5	1474	380	260
RCD-Y 900-4T-22	35016	52300	22,00	105	41,6	1475	380	295
RCD-Y 1000-4T-37	35017	71650	37,00	108	68,6	1475	380	395

ROOF FAN WITH VERTICAL AIR OUTLET

RCD-D SERIES



*The case is made of self-supporting galvanized sheet metal frame construction with high impact resistant .

*Vertical air stream , centrifugal impeller with backward curved blades.

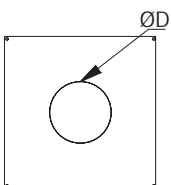
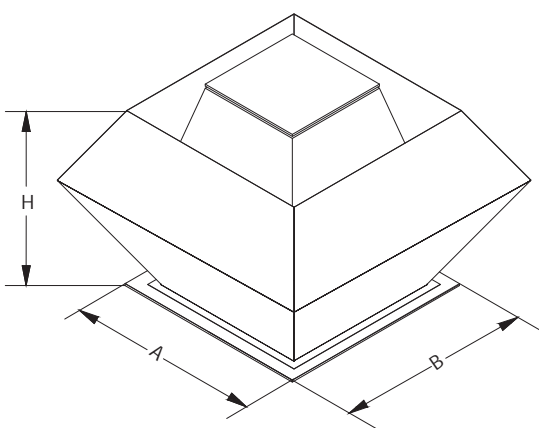
*Suitable for operating temperatures of up to 120 °C steady. The motors is out from the air stream, protection rating IP 44.

*The motor is speed controllable by frequency converter.

*Resistant coated corrosion.

*Efficiency class is IE3. Three-phase 230/400 V 50 Hz

Technical details;



MODELS	DIMENSIONS (mm)			
	ØD	A	B	H
RCD-D 315-2T-1,1	200	500	500	500
RCD-D 355-2T-2,2	230	600	600	700
RCD-D 400-2T-4	255	700	700	800
RCD-D 450-2T-7,5	290	700	700	1000
RCD-D 315-4T-0,37	200	500	500	500
RCD-D 355-4T-0,37	230	600	600	700
RCD-D 400-4T-0,55	255	700	700	800
RCD-D 450-4T-0,75	290	700	700	800
RCD-D 500-4T-1,5	325	800	800	950
RCD-D 560-4T-3	365	800	800	1000
RCD-D 630-4T-5,5	410	900	900	1200
RCD-D 710-4T-7,5	460	1100	1100	1400
RCD-D 710-4T-11	460	1100	1100	1400
RCD-D 800-4T-15	510	1200	1200	1400
RCD-D 800-4T-18,5	510	1300	1300	1500
RCD-D 900-4T-22	610	1400	1400	1500
RCD-D 1000-4T-37	660	1400	1400	1600

MODEL	PRODUCT CODE	Airflow (m ³ /h)	PWR (KW)	Sound (dBA)	Current (AMP)	Rotation (RPM)	VOLTAGE (V)	Weight (KG)
RCD-D 315-2T-1,1	36001	4500	1,10	96	2,3	2900	380	32
RCD-D 355-2T-2,2	36002	6980	2,20	97	4,5	2900	380	50
RCD-D 400-2T-4	36003	9800	4,00	100	7,9	2920	380	90
RCD-D 450-2T-7,5	36004	13800	7,50	98	13,6	2925	380	132
RCD-D 315-4T-0,37	36005	2450	0,37	82	1,2	1390	380	29
RCD-D 355-4T-0,37	36006	3650	0,37	81	1,2	1390	380	42
RCD-D 400-4T-0,55	36007	4550	0,55	84	1,6	1385	380	60
RCD-D 450-4T-0,75	36008	6600	0,75	82	1,7	1445	380	76
RCD-D 500-4T-1,5	36009	9180	1,50	86	3,5	1449	380	88
RCD-D 560-4T-3	36010	13300	3,00	95	6,2	1446	380	105
RCD-D 630-4T-5,5	36011	18000	5,50	98	10,6	1467	380	141
RCD-D 710-4T-7,5	36012	27200	7,50	102	15,2	1467	380	158
RCD-D 710-4T-11	36013	28150	11,00	101	21,0	1470	380	180
RCD-D 800-4T-15	36014	37900	15,00	102	30,9	1477	380	220
RCD-D 800-4T-18,5	36015	39350	18,50	103	39,5	1474	380	260
RCD-D 900-4T-22	36016	52300	22,00	105	41,6	1475	380	295
RCD-D 1000-4T-37	36017	71650	37,00	108	68,6	1475	380	395

AKD SERIES



*Axial fan Series AKD, suitable for operating temperatures of up to 55°C .

*Impeller with adjustable pitch angle for maximum efficiency fibreglass-reinforced polyamide hub and blades.

*Aluminum impeller option is also available.

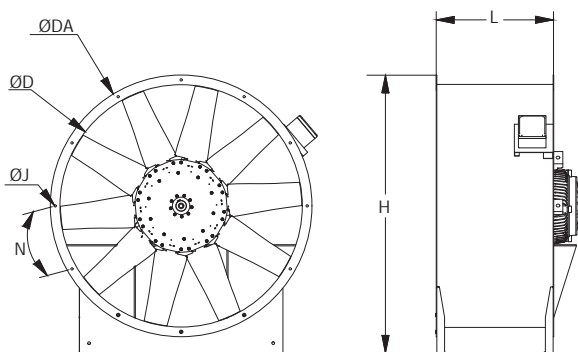
*Resistant to electrostatic powder coated corrosion.

*The motor is speed controllable by frequency converter.

*Efficiency class is IE3. Three-Phase 230/400V 50Hz.

*Usage; suitable for installation in ducts.Suitable for outdoor use.

Technical details;



MODELS	DIMENSIONS (mm)					
	ØD	ØDA	L	H	ØJ	N
AKD 35-2-4T	355	455	330	545	14	8x45°
AKD 40-2-4T	400	500	330	590	14	8x45°
AKD 45-2-4T	450	550	330	640	14	8x45°
AKD 63-2-4T	630	730	500	820	14	12x30°
AKD 71-2-4T	710	810	500	900	14	12x30°
AKD 80-2-4T	800	900	500	990	14	12x30°
AKD 90-2-4T	900	1000	600	1090	14	16x22,5°
AKD 100-2-4T	1000	1100	600	1190	14	16x22,5°
AKD 112-2-4T	1120	1220	600	1310	14	16x22,5°
AKD 125-2-4T	1250	1350	600	1440	14	16x22,5°

MODEL	PRODUCT CODE	Airflow (m ³ /h)	PWR (KW)	Sound (dBA)	Current (AMP)	Rotation (RPM)	VOLTAGE (V)	Weight (KG)
AKD 35-2T-0,37	11001	4906	0,37	83	1,05	2850	380	23
AKD 35-2T-0,55	11002	6048	0,55	86	1,21	2780	380	24
AKD 35-2T-0,75	11003	6810	0,75	89	1,60	2880	380	25
AKD 35-2T-1,1	11004	7863	1,10	87	2,30	2900	380	25
AKD 40-2T-1,1	11005	9767	1,10	92	2,30	2900	380	30
AKD 40-2T-1,5	11006	10652	1,50	91	3,30	2900	380	33
AKD 45-2T-1,5	11007	12432	1,50	92	3,30	2900	380	35
AKD 45-2T-2,2	11008	15232	2,20	94	4,45	2900	380	40
AKD 63-2T-1,5	11009	16464	1,50	101	3,30	2900	380	68
AKD 63-2T-2,2	11010	20272	2,20	97	4,45	2900	380	68
AKD 63-2T-3	11011	22512	3,00	96	5,80	2900	380	73
AKD 63-2T-4	11012	25760	4,00	96	7,40	2920	380	78
AKD 63-2T-5,5	11013	30128	5,50	97	9,70	2925	380	80
AKD 63-2T-7,5	11014	34384	7,50	100	12,90	2930	380	83
AKD 63-2T-7,5/H	11015	29344	7,50	100	12,90	2930	380	83
AKD 71-2T-5,5	11016	34944	5,50	99	9,70	2925	380	90
AKD 71-2T-7,5	11017	41104	7,50	100	12,90	2930	380	94
AKD 71-2T-11	11018	47824	11,00	101	19,00	2955	380	104
AKD 71-2T-11/H	11019	38864	11,00	108	19,00	2955	380	104
AKD 71-2T-15	11020	47488	15,00	104	25,70	2955	380	110
AKD 80-2T-7,5	11021	44240	7,50	105	12,90	2930	380	100
AKD 80-2T-11	11022	54320	11,00	106	19,00	2955	380	110
AKD 80-2T-15	11023	51744	15,00	107	25,70	2955	380	115
AKD 80-2T-18,5	11024	58800	18,50	109	31,40	2960	380	120
AKD 80-2T-22	11025	64064	22,00	110	36,90	2960	380	153
AKD 80-2T-22/H	11026	47936	22,00	110	36,90	2960	380	153
AKD 63-4T-0,75	11027	15904	0,75	83	1,70	1445	380	55
AKD 63-4T-1,1	11028	18144	1,10	84	2,60	1447	380	58
AKD 63-4T-1,5	11029	18704	1,50	86	3,50	1449	380	60
AKD 63-4T-2,2	11030	23184	2,20	90	4,90	1443	380	73
AKD 71-4T-2,2	11031	26880	2,20	89	4,90	1443	380	79
AKD 71-4T-3	11032	30576	3,00	90	6,20	1446	380	85
AKD 71-4T-4	11033	34272	4,00	93	8,20	1452	380	90
AKD 80-4T-3	11034	36064	3,00	92	6,20	1446	380	90
AKD 80-4T-4	11035	40992	4,00	93	8,20	1452	380	95
AKD 80-4T-5,5	11036	44128	5,50	96	10,60	1467	380	105
AKD 80-4T-7,5	11037	46032	7,50	95	15,20	1467	380	130
AKD 90-4T-3	11038	39424	3,00	97	6,60	1446	380	100
AKD 90-4T-4	11039	46368	4,00	96	8,20	1452	380	105
AKD 90-4T-5,5	11040	50064	5,50	96	11,20	1467	380	115
AKD 90-4T-7,5	11041	57120	7,50	97	15,40	1467	380	140
AKD 100-4T-4	11042	53872	4,00	98	8,20	1452	380	115
AKD 100-4T-5,5	11043	52976	5,50	103	11,20	1467	380	120
AKD 100-4T-7,5	11044	63504	7,50	102	15,40	1467	380	145
AKD 100-4T-11	11045	75376	11,00	104	21,00	1470	380	192
AKD 100-4T-11/H	11046	61152	11,00	102	21,00	1470	380	192
AKD 112-4T-5,5	11047	66528	5,50	100	11,20	1467	380	130
AKD 112-4T-7,5	11048	75040	7,50	100	15,40	1467	380	150
AKD 112-4T-11	11049	82320	11,00	102	21,00	1470	380	195
AKD 112-4T-15	11050	89936	15,00	104	30,90	1477	380	205
AKD 125-4T-11	11051	90944	11,00	108	21,00	1470	380	200
AKD 125-4T-15	11052	105840	15,00	108	30,90	1477	380	210
AKD 125-4T-15/H	11053	83440	15,00	114	30,90	1477	380	210
AKD 125-4T-18,5	11054	113120	18,50	107	39,50	1474	380	230
AKD 125-4T-22	11055	124320	22,00	106	41,60	1485	380	250
AKD 125-4T-22/H	11056	102480	22,00	112	41,60	1485	380	250
AKD 125-4T-30	11057	137760	30,00	109	54,80	1475	380	310
AKD 125-4T-30/H	11058	123200	30,00	112	54,80	1475	380	310
AKD 125-4T-37	11059	138880	37,00	108	68,60	1475	380	340
AKD 125-4T-37/H	11060	119840	37,00	111	68,60	1475	380	340
AKD 125-4T-45	11061	150080	45,00	109	80,00	1475	380	445
AKD 125-4T-45/H	11062	136640	45,00	111	67,00	1475	380	445
AKD 125-4T-55	11063	168000	55,00	111	96,00	1480	380	540
AKD 125-4T-55/H	11064	153440	55,00	110	96,00	1480	380	540

DUCT TYPE AXIAL FAN WITH CONSOLE

AWD SERIES



*The case is made Steel sheet support frame with a square wall plate with electrostatic powder coating.

*Adjustable fiber glass reinforced polyamide impeller structure.

*Optional square mounting console and round mounting console options are available.

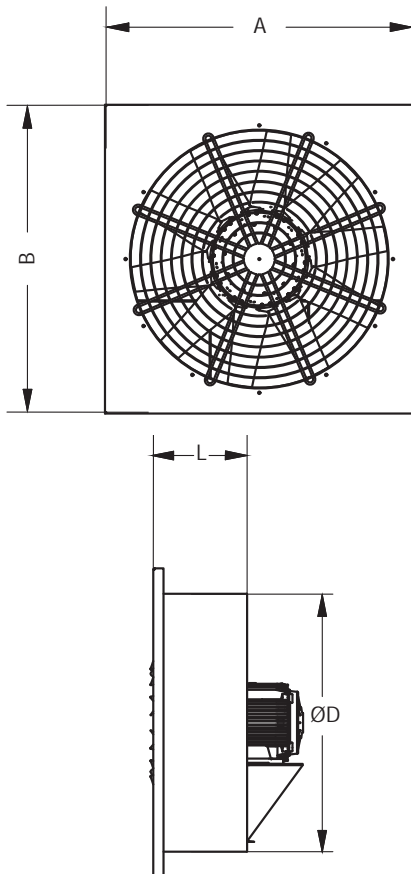
*Suitable for operation with motor frequency converter.

*Integrated thermal contacts for motor protection, which needs to be connected to a motor protection unit.

*Optional bidirectional air flow is integrated into the operation.

*Efficiency class is IE3, 230/400V 50 Hz.

Technical details;



MODELS	DIMENSIONS (mm)			
	A	B	ØD	L
AWD 35-2-4T	500	500	355	300
AWD 40-2-4T	550	550	400	300
AWD 45-2-4T	600	600	450	300
AWD 63-2-4T	800	800	630	350
AWD 71-2-4T	900	900	710	350
AWD 80-2-4T	1000	1000	800	350
AWD 90-2-4T	1100	1100	900	350
AWD 100-2-4T	1200	1200	1000	350
AWD 112-2-4T	1400	1400	1120	350
AWD 125-2-4T	1450	1450	1250	350

MODEL	PRODUCT CODE	Airflow (m ³ /h)	PWR (KW)	Sound (dBA)	Current (AMP)	Rotation (RPM)	VOLTAGE (V)	Weight (KG)
AWD 35-2T-0,37	54001	4906	0,37	83	1,05	2850	380	27
AWD 35-2T-0,55	54002	6048	0,55	86	1,21	2780	380	28
AWD 35-2T-0,75	54003	6810	0,75	89	1,60	2880	380	29
AWD 35-2T-1,1	54004	7863	1,10	87	2,30	2900	380	29
AWD 40-2T-1,1	54005	9767	1,10	92	2,30	2900	380	34
AWD 40-2T-1,5	54006	10652	1,50	91	3,30	2900	380	35
AWD 45-2T-1,5	54007	12432	1,50	92	3,30	2900	380	37
AWD 45-2T-2,2	54008	15232	2,20	94	4,45	2900	380	42
AWD 63-2T-1,5	54009	16464	1,50	101	3,30	2900	380	65
AWD 63-2T-2,2	54010	20272	2,20	97	4,45	2900	380	65
AWD 63-2T-3	54011	22512	3,00	96	5,80	2900	380	69
AWD 63-2T-4	54012	25760	4,00	96	7,40	2920	380	73
AWD 63-2T-5,5	54013	30128	5,50	97	9,70	2925	380	76
AWD 63-2T-7,5	54014	34384	7,50	100	12,90	2930	380	79
AWD 63-2T-7,5/H	54015	29344	7,50	100	12,90	2930	380	79
AWD 71-2T-5,5	54016	34944	5,50	99	9,70	2925	380	93
AWD 71-2T-7,5	54017	41104	7,50	100	12,90	2930	380	97
AWD 71-2T-11	54018	47824	11,00	101	19,00	2955	380	107
AWD 71-2T-11/H	54019	38864	11,00	108	19,00	2955	380	107
AWD 71-2T-15	54020	47488	15,00	104	25,70	2955	380	113
AWD 80-2T-7,5	54021	44240	7,50	105	12,90	2930	380	108
AWD 80-2T-11	54022	54320	11,00	106	19,00	2955	380	116
AWD 80-2T-15	54023	51744	15,00	107	25,70	2955	380	122
AWD 80-2T-18,5	54024	58800	18,50	109	31,40	2960	380	127
AWD 80-2T-22	54025	64064	22,00	110	36,90	2960	380	150
AWD 80-2T-22/H	54026	47936	22,00	110	36,90	2960	380	150
AWD 63-4T-0,75	54027	15904	0,75	83	1,70	1445	380	55
AWD 63-4T-1,1	54028	18144	1,10	84	2,60	1447	380	59
AWD 63-4T-1,5	54029	18704	1,50	86	3,50	1449	380	61
AWD 63-4T-2,2	54030	23184	2,20	90	4,90	1443	380	71
AWD 71-4T-2,2	54031	26880	2,20	89	4,90	1443	380	80
AWD 71-4T-3	54032	30576	3,00	90	6,20	1446	380	86
AWD 71-4T-4	54033	34272	4,00	93	8,20	1452	380	91
AWD 80-4T-3	54034	36064	3,00	92	6,20	1446	380	102
AWD 80-4T-4	54035	40992	4,00	93	8,20	1452	380	107
AWD 80-4T-5,5	54036	44128	5,50	96	10,60	1467	380	111
AWD 80-4T-7,5	54037	46032	7,50	95	15,20	1467	380	136
AWD 90-4T-3	54038	39424	3,00	97	6,60	1446	380	107
AWD 90-4T-4	54039	46368	4,00	96	8,20	1452	380	110
AWD 90-4T-5,5	54040	50064	5,50	96	11,20	1467	380	120
AWD 90-4T-7,5	54041	57120	7,50	97	15,40	1467	380	145
AWD 100-4T-4	54042	53872	4,00	98	8,20	1452	380	127
AWD 100-4T-5,5	54043	52976	5,50	103	11,20	1467	380	132
AWD 100-4T-7,5	54044	63504	7,50	102	15,40	1467	380	148
AWD 100-4T-11	54045	75376	11,00	104	21,00	1470	380	195
AWD 100-4T-11/H	54046	61152	11,00	102	21,00	1470	380	195
AWD 112-4T-5,5	54047	66528	5,50	100	11,20	1467	380	145
AWD 112-4T-7,5	54048	75040	7,50	100	15,40	1467	380	163
AWD 112-4T-11	54049	82320	11,00	102	21,00	1470	380	207
AWD 112-4T-15	54050	89936	15,00	104	30,90	1477	380	217
AWD 125-4T-11	54051	90944	11,00	108	21,00	1470	380	213
AWD 125-4T-15	54052	105840	15,00	108	30,90	1477	380	223
AWD 125-4T-15/H	54053	83440	15,00	114	30,90	1477	380	223
AWD 125-4T-18,5	54054	113120	18,50	107	39,50	1474	380	243
AWD 125-4T-22	54055	124320	22,00	106	41,60	1485	380	263
AWD 125-4T-22/H	54056	102480	22,00	112	41,60	1485	380	263
AWD 125-4T-30	54057	137760	30,00	109	54,80	1475	380	323
AWD 125-4T-30/H	54058	123200	30,00	112	54,80	1475	380	323
AWD 125-4T-37	54059	138880	37,00	108	68,60	1475	380	343
AWD 125-4T-37/H	54060	119840	37,00	111	68,60	1475	380	343
AWD 125-4T-45	54061	150080	45,00	109	80,00	1475	380	448
AWD 125-4T-45/H	54062	136640	45,00	111	67,00	1475	380	448
AWD 125-4T-55	54063	168000	55,00	111	96,00	1480	380	525
AWD 125-4T-55/H	54064	153440	55,00	110	96,00	1480	380	525

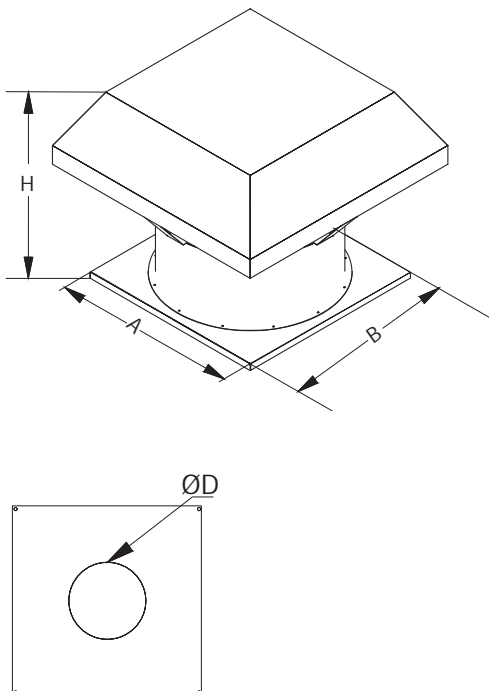
ROOF MOUNTED AXIAL EXTRACTOR FAN

ACD-Y SERIES



- *Impeller with adjustable pitch angle for maximum efficiency fibreglass-reinforced polyamide hub and blades. Aluminum impeller option is also available.
- *Resistant to electrostatic powder coated corrosion. Hot dip galvanized steel is available upon request.
- *Bird control grille.
- *The motor is speed controllable by frequency converter.
- *Efficiency class is IE3. Three- Phase 230/400V 50Hz.
- *Usage; suitable for installation in ducts. Suitable for outdoor use.

Technical details;



MODELS	DIMENSIONS (mm)			
	A	B	ØD	H
ACD-Y 35-2-4T	500	500	355	500
ACD-Y 40-2-4T	550	550	400	500
ACD-Y 45-2-4T	600	600	450	600
ACD-Y 63-2-4T	800	800	630	700
ACD-Y 71-2-4T	900	900	710	700
ACD-Y 80-2-4T	1000	1000	800	700
ACD-Y 90-2-4T	1100	1100	900	800
ACD-Y 100-2-4T	1200	1200	1000	800
ACD-Y 112-2-4T	1400	1400	1120	800
ACD-Y 125-2-4T	1450	1450	1250	800



MODEL	PRODUCT CODE	Airflow (m ³ /h)	PWR (KW)	Sound (dBA)	Current (AMP)	Rotation (RPM)	VOLTAGE (V)	Weight (KG)
ACD-Y 35-2T-0,37	32001	4906	0,37	88	1,05	2850	380	48
ACD-Y 35-2T-0,55	32002	6048	0,55	91	1,21	2780	380	49
ACD-Y 35-2T-0,75	32003	6810	0,75	94	1,60	2880	380	50
ACD-Y 35-2T-1,1	32004	7863	1,10	92	2,30	2900	380	50
ACD-Y 40-2T-1,1	32005	9767	1,10	97	2,30	2900	380	57
ACD-Y 71-2-4T	32006	10652	1,50	96	3,30	2900	380	58
ACD-Y 45-2T-1,5	32007	12432	1,50	97	3,30	2900	380	66
ACD-Y 45-2T-2,2	32008	15232	2,20	99	4,45	2900	380	72
ACD-Y 63-2T-1,5	32009	16464	1,50	106	3,30	2900	380	114
ACD-Y 63-2T-2,2	32010	20272	2,20	102	4,45	2900	380	114
ACD-Y 63-2T-3	32011	22512	3,00	101	5,80	2900	380	119
ACD-Y 63-2T-4	32012	25760	4,00	101	7,40	2920	380	125
ACD-Y 63-2T-5,5	32013	30128	5,50	102	9,70	2925	380	127
ACD-Y 63-2T-7,5	32014	34384	7,50	105	12,90	2930	380	130
ACD-Y 63-2T-7,5/H	32015	29344	7,50	105	12,90	2930	380	130
ACD-Y 71-2T-5,5	32016	34944	5,50	104	9,70	2925	380	150
ACD-Y 71-2T-7,5	32017	41104	7,50	105	12,90	2930	380	154
ACD-Y 71-2T-11	32018	47824	11,00	106	19,00	2955	380	164
ACD-Y 71-2T-11/H	32019	38864	11,00	113	19,00	2955	380	164
ACD-Y 71-2T-15	32020	47488	15,00	109	25,70	2955	380	170
ACD-Y 80-2T-7,5	32021	44240	7,50	110	12,90	2930	380	170
ACD-Y 80-2T-11	32022	54320	11,00	111	19,00	2955	380	180
ACD-Y 80-2T-15	32023	51744	15,00	112	25,70	2955	380	185
ACD-Y 80-2T-18,5	32024	58800	18,50	114	31,40	2960	380	190
ACD-Y 80-2T-22	32025	64064	22,00	115	36,90	2960	380	223
ACD-Y 80-2T-22/H	32026	47936	22,00	115	36,90	2960	380	223
ACD-Y 63-4T-0,75	32027	15904	0,75	88	1,70	1445	380	102
ACD-Y 63-4T-1,1	32028	18144	1,10	89	2,60	1447	380	105
ACD-Y 63-4T-1,5	32029	18704	1,50	91	3,50	1449	380	107
ACD-Y 63-4T-2,2	32030	23184	2,20	95	4,90	1443	380	110
ACD-Y 71-4T-2,2	32031	26880	2,20	94	4,90	1443	380	140
ACD-Y 71-4T-3	32032	30576	3,00	95	6,20	1446	380	146
ACD-Y 71-4T-4	32033	34272	4,00	98	8,20	1452	380	152
ACD-Y 80-4T-3	32034	36064	3,00	97	6,20	1446	380	160
ACD-Y 80-4T-4	32035	40992	4,00	98	8,20	1452	380	165
ACD-Y 80-4T-5,5	32036	44128	5,50	101	10,60	1467	380	175
ACD-Y 80-4T-7,5	32037	46032	7,50	100	15,20	1467	380	190
ACD-Y 90-4T-3	32038	39424	3,00	102	6,60	1446	380	184
ACD-Y 90-4T-4	32039	46368	4,00	101	8,20	1452	380	189
ACD-Y 90-4T-5,5	32040	50064	5,50	101	11,20	1467	380	199
ACD-Y 90-4T-7,5	32041	57120	7,50	102	15,40	1467	380	224
ACD-Y 100-4T-4	32042	53872	4,00	103	8,20	1452	380	210
ACD-Y 100-4T-5,5	32043	52976	5,50	108	11,20	1467	380	215
ACD-Y 100-4T-7,5	32044	63504	7,50	107	15,40	1467	380	240
ACD-Y 100-4T-11	32045	75376	11,00	109	21,00	1470	380	273
ACD-Y 100-4T-11/H	32046	61152	11,00	107	21,00	1470	380	273
ACD-Y 112-4T-5,5	32047	66528	5,50	105	11,20	1467	380	240
ACD-Y 112-4T-7,5	32048	75040	7,50	105	15,40	1467	380	260
ACD-Y 112-4T-11	32049	82320	11,00	107	21,00	1470	380	305
ACD-Y 112-4T-15	32050	89936	15,00	109	30,90	1477	380	315
ACD-Y 125-4T-11	32051	90944	11,00	113	21,00	1470	380	322
ACD-Y 125-4T-15	32052	105840	15,00	113	30,90	1477	380	335
ACD-Y 125-4T-15/H	32053	83440	15,00	119	30,90	1477	380	335
ACD-Y 125-4T-18,5	32054	113120	18,50	112	39,50	1474	380	355
ACD-Y 125-4T-22	32055	124320	22,00	111	41,60	1485	380	375
ACD-Y 125-4T-22/H	32056	102480	22,00	117	41,60	1485	380	375
ACD-Y 125-4T-30	32057	137760	30,00	114	54,80	1475	380	435
ACD-Y 125-4T-30/H	32058	123200	30,00	117	54,80	1475	380	435
ACD-Y 125-4T-37	32059	138880	37,00	113	68,60	1475	380	465
ACD-Y 125-4T-37/H	32060	119840	37,00	116	68,60	1475	380	465
ACD-Y 125-4T-45	32061	150080	45,00	114	80,00	1475	380	570
ACD-Y 125-4T-45/H	32062	136640	45,00	116	67,00	1475	380	570
ACD-Y 125-4T-55	32063	168000	55,00	116	96,00	1480	380	665
ACD-Y 125-4T-55/H	32064	153440	55,00	115	96,00	1480	380	665

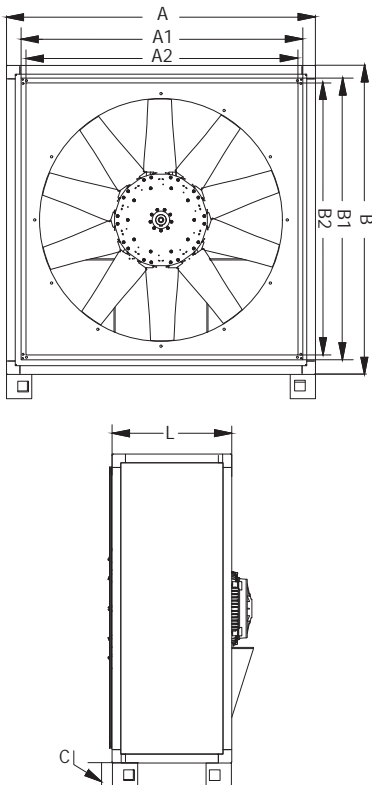
AXIAL FANS WITH ACOUSTICALLY INSULATED BOX

AHD SERIES



- * Impeller with adjustable pitch angle for maximum efficiency aluminum hub and blades. Aluminium anti-spark ring.
- * Resistant to electrostatic powder coated corrosion. Hot dip galvanized steel is available upon request.
- * Cell panels are made of double-walled galvanized and are available in 5 cm and 10 cm thickness. Glass wool or stone wool options are available as insulation material in the panel.
- * The motor is speed controllable by frequency converter.
- * Efficiency class is IE2. IE3 option is also available.
- * Usage; suitable for installation in ducts. Suitable for outdoor use.

Technical details;



MODELS	DIMENSIONS (mm)							
	A	A1	A2	B	B1	B2	L	C
AHD 35-2-4T	580	550	500	580	550	500	350	125
AHD 40-2-4T	630	600	550	630	600	550	400	125
AHD 45-2-4T	680	650	600	680	650	600	400	125
AHD 63-2-4T	880	850	800	880	850	800	550	125
AHD 71-2-4T	980	950	900	980	950	900	550	125
AHD 80-2-4T	1080	1050	1000	1080	1050	1000	550	125
AHD 90-2-4T	1280	1250	1200	1280	1250	1200	650	125
AHD 100-2-4T	1380	1350	1300	1380	1350	1300	650	125
AHD 112-2-4T	1480	1450	1400	1480	1450	1400	650	125
AHD 125-2-4T	1480	1450	1400	1480	1450	1400	650	125

MODEL	PRODUCT CODE	Airflow (m ³ /h)	PWR (KW)	Sound (dBA)	Current (AMP)	Rotation (RPM)	VOLTAGE (V)	Weight (KG)
AHD 35-2T-0,37	21001	4906	0,37	78	1,05	2850	380	63
AHD 35-2T-0,55	21002	6048	0,55	81	1,21	2780	380	64
AHD 35-2T-0,75	21003	6810	0,75	84	1,60	2880	380	65
AHD 35-2T-1,1	21004	7863	1,10	82	2,30	2900	380	65
AHD 40-2T-1,1	21005	9767	1,10	87	2,30	2900	380	70
AHD 71-2-4T	21006	10652	1,50	86	3,30	2900	380	72
AHD 45-2T-1,5	21007	12432	1,50	87	3,30	2900	380	80
AHD 45-2T-2,2	21008	15232	2,20	89	4,45	2900	380	80
AHD 63-2T-1,5	21009	16464	1,50	96	3,30	2900	380	158
AHD 63-2T-2,2	21010	20272	2,20	92	4,45	2900	380	158
AHD 63-2T-3	21011	22512	3,00	91	5,80	2900	380	162
AHD 63-2T-4	21012	25760	4,00	91	7,40	2920	380	167
AHD 63-2T-5,5	21013	30128	5,50	92	9,70	2925	380	170
AHD 63-2T-7,5	21014	34384	7,50	95	12,90	2930	380	173
AHD 63-2T-7,5/H	21015	29344	7,50	95	12,90	2930	380	173
AHD 71-2T-5,5	21016	34944	5,50	94	9,70	2925	380	180
AHD 71-2T-7,5	21017	41104	7,50	95	12,90	2930	380	184
AHD 71-2T-11	21018	47824	11,00	96	19,00	2955	380	194
AHD 71-2T-11/H	21019	38864	11,00	103	19,00	2955	380	194
AHD 71-2T-15	21020	47488	15,00	99	25,70	2955	380	200
AHD 80-2T-7,5	21021	44240	7,50	100	12,90	2930	380	215
AHD 80-2T-11	21022	54320	11,00	101	19,00	2955	380	225
AHD 80-2T-15	21023	51744	15,00	102	25,70	2955	380	230
AHD 80-2T-18,5	21024	58800	18,50	104	31,40	2960	380	235
AHD 80-2T-22	21025	64064	22,00	105	36,90	2960	380	258
AHD 80-2T-22/H	21026	47936	22,00	105	36,90	2960	380	258
AHD 63-4T-0,75	21027	15904	0,75	78	1,70	1445	380	125
AHD 63-4T-1,1	21028	18144	1,10	79	2,60	1447	380	128
AHD 63-4T-1,5	21029	18704	1,50	81	3,50	1449	380	130
AHD 63-4T-2,2	21030	23184	2,20	85	4,90	1443	380	143
AHD 71-4T-2,2	21031	26880	2,20	84	4,90	1443	380	192
AHD 71-4T-3	21032	30576	3,00	85	6,20	1446	380	197
AHD 71-4T-4	21033	34272	4,00	88	8,20	1452	380	197
AHD 80-4T-3	21034	36064	3,00	87	6,20	1446	380	212
AHD 80-4T-4	21035	40992	4,00	88	8,20	1452	380	217
AHD 80-4T-5,5	21036	44128	5,50	91	10,60	1467	380	227
AHD 80-4T-7,5	21037	46032	7,50	90	15,20	1467	380	245
AHD 90-4T-3	21038	39424	3,00	92	6,60	1446	380	235
AHD 90-4T-4	21039	46368	4,00	91	8,20	1452	380	240
AHD 90-4T-5,5	21040	50064	5,50	91	11,20	1467	380	255
AHD 90-4T-7,5	21041	57120	7,50	92	15,40	1467	380	275
AHD 100-4T-4	21042	53872	4,00	93	8,20	1452	380	270
AHD 100-4T-5,5	21043	52976	5,50	98	11,20	1467	380	282
AHD 100-4T-7,5	21044	63504	7,50	97	15,40	1467	380	323
AHD 100-4T-11	21045	75376	11,00	99	21,00	1470	380	350
AHD 100-4T-11/H	21046	61152	11,00	97	21,00	1470	380	350
AHD 112-4T-5,5	21047	66528	5,50	95	11,20	1467	380	291
AHD 112-4T-7,5	21048	75040	7,50	95	15,40	1467	380	310
AHD 112-4T-11	21049	82320	11,00	97	21,00	1470	380	340
AHD 112-4T-15	21050	89936	15,00	99	30,90	1477	380	350
AHD 125-4T-11	21051	90944	11,00	103	21,00	1470	380	385
AHD 125-4T-15	21052	105840	15,00	103	30,90	1477	380	395
AHD 125-4T-15/H	21053	83440	15,00	109	30,90	1477	380	395
AHD 125-4T-18,5	21054	113120	18,50	102	39,50	1474	380	415
AHD 125-4T-22	21055	124320	22,00	101	41,60	1485	380	430
AHD 125-4T-22/H	21056	102480	22,00	107	41,60	1485	380	430
AHD 125-4T-30	21057	137760	30,00	104	54,80	1475	380	490
AHD 125-4T-30/H	21058	123200	30,00	107	54,80	1475	380	490
AHD 125-4T-37	21059	138880	37,00	103	68,60	1475	380	520
AHD 125-4T-37/H	21060	119840	37,00	106	68,60	1475	380	520
AHD 125-4T-45	21061	150080	45,00	104	80,00	1475	380	625
AHD 125-4T-45/H	21062	136640	45,00	106	67,00	1475	380	625
AHD 125-4T-55	21063	168000	55,00	106	96,00	1480	380	715
AHD 125-4T-55/H	21064	153440	55,00	105	96,00	1480	380	715

AXIAL TYPE OF SMOKE FAN

AIR AKD SERIES



*Axial fan Series AIR AKD, suitable for operating temperatures of up to 300 °C / 2 H . 400 °C / 2 H option is available.

*Impeller with adjustable pitch angle for maximum efficiency aluminum hub and blades.

*Resistant to electrostatic powder coated corrosion. Hot dip galvanized steel is available upon request.

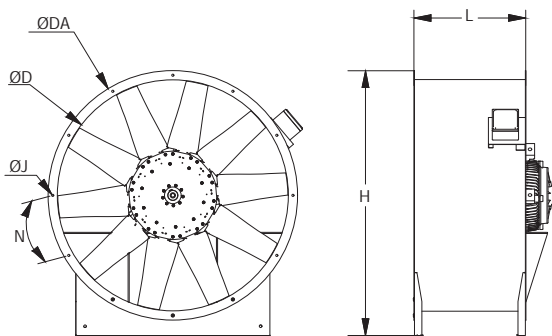
*The motor is speed controllable by frequency converter.

*All models H class motor three- phase 230/400V 50 Hz.

*Usage; suitable for installation in ducts. Suitable for outdoor use.



Technical details;



MODELS	DIMENSIONS (mm)					
	ØD	ØDA	L	H	ØJ	N
AIR AKD 35-2-4T	355	455	330	545	14	8x45°
AIR AKD 40-2-4T	400	500	330	590	14	8x45°
AIR AKD 45-2-4T	450	550	330	640	14	8x45°
AIR AKD 63-2-4T	630	730	500	820	14	12x30°
AIR AKD 71-2-4T	710	810	500	900	14	12x30°
AIR AKD 80-2-4T	800	900	500	990	14	12x30°
AIR AKD 90-2-4T	900	1000	600	1090	14	16x22,5°
AIR AKD 100-2-4T	1000	1100	600	1190	14	16x22,5°
AIR AKD 112-2-4T	1120	1220	600	1310	14	16x22,5°
AIR AKD 125-2-4T	1250	1350	600	1440	14	16x22,5°

MODEL	PRODUCT CODE	Airflow (m ³ /h)	PWR (KW)	Sound (dBA)	Current (AMP)	Rotation (RPM)	VOLTAGE (V)	Weight (KG)
AIR AKD 35-2T-0,75	12001	6855	0,75	94	1,70	2860	380	30
AIR AKD 35-2T-1,1	12002	7975	1,10	92	2,30	2880	380	32
AIR AKD 40-2T-1,1	12003	9901	1,10	97	2,30	2880	380	34
AIR AKD 40-2T-1,5	12004	10652	1,50	96	3,30	2880	380	38
AIR AKD 45-2T-1,5	12005	12432	1,50	97	3,30	2880	380	40
AIR AKD 45-2T-2,2	12006	15008	2,20	99	4,50	2870	380	43
AIR AKD 63-2T-1,5	12007	16352	1,50	107	3,30	2880	380	55
AIR AKD 63-2T-2,2	12008	20048	2,20	102	4,50	2870	380	58
AIR AKD 63-2T-3	12009	22400	3,00	101	5,90	2880	380	67
AIR AKD 63-2T-4	12010	26656	4,00	101	7,90	2880	380	75
AIR AKD 63-2T-5,5	12011	29904	5,50	102	10,30	2900	380	82
AIR AKD 63-2T-7,5	12012	35056	7,50	105	13,60	2910	380	88
AIR AKD 63-2T-7,5/H	12013	29232	7,50	105	13,60	2910	380	88
AIR AKD 71-2T-5,5	12014	34608	5,50	104	10,30	2900	380	85
AIR AKD 71-2T-7,5	12015	40768	7,50	105	13,60	2910	380	92
AIR AKD 71-2T-11	12016	48048	11,00	107	19,50	2945	380	142
AIR AKD 71-2T-11/H	12017	38976	11,00	113	19,50	2945	380	150
AIR AKD 71-2T-15	12018	47264	15,00	108	28,50	2945	380	150
AIR AKD 80-2T-15	12019	51520	15,00	112	28,50	2945	380	228
AIR AKD 80-2T-18,5	12020	58576	18,50	114	32,30	2950	380	260
AIR AKD 80-2T-22	12021	63840	22,00	114	38,30	2950	380	295
AIR AKD 80-2T-22/H	12022	47824	22,00	115	38,30	2950	380	300
AIR AKD 63-4T-1,5	12023	18704	1,50	91	3,50	1430	380	82
AIR AKD 63-4T-2,2	12024	23072	2,20	95	5,00	1435	380	88
AIR AKD 71-4T-2,2	12025	26768	3,00	94	6,60	1435	380	95
AIR AKD 71-4T-3	12026	30240	2,20	96	5,00	1435	380	102
AIR AKD 71-4T-4	12027	34272	4,00	98	8,40	1455	380	110
AIR AKD 80-4T-3	12028	36064	3,00	96	6,60	1435	380	112
AIR AKD 80-4T-4	12029	41104	4,00	103	8,40	1455	380	122
AIR AKD 80-4T-5,5	12030	44016	5,50	101	11,20	1465	380	110
AIR AKD 80-4T-7,5	12031	46032	7,50	100	15,40	1465	380	112
AIR AKD 90-4T-3	12032	39424	3,00	102	6,60	1435	380	120
AIR AKD 90-4T-4	12033	46480	4,00	101	8,40	1455	380	131
AIR AKD 90-4T-5,5	12034	49952	5,50	101	11,20	1465	380	145
AIR AKD 90-4T-7,5	12035	57008	7,50	102	15,40	1465	380	150
AIR AKD 100-4T-4	12036	53984	4,00	103	8,40	1455	380	133
AIR AKD 100-4T-5,5	12037	52976	5,50	108	11,20	1465	380	142
AIR AKD 100-4T-7,5	12038	63392	7,50	107	15,40	1465	380	158
AIR AKD 100-4T-11	12039	77840	11,00	107	21,30	1465	380	210
AIR AKD 100-4T-11/H	12040	60928	11,00	109	21,30	1465	380	215
AIR AKD 112-4T-5,5	12041	66416	5,50	105	11,20	1465	380	150
AIR AKD 112-4T-7,5	12042	74928	7,50	105	15,40	1465	380	152
AIR AKD 112-4T-11	12043	82096	11,00	107	21,30	1465	380	190
AIR AKD 112-4T-15	12044	89152	15,00	108	29,30	1470	380	222
AIR AKD 125-4T-11	12045	92176	11,00	114	21,30	1465	380	196
AIR AKD 125-4T-15	12046	106960	15,00	113	29,80	1465	380	207
AIR AKD 125-4T-15/H	12047	84448	15,00	119	29,80	1465	380	217
AIR AKD 125-4T-18,5	12048	115360	18,50	112	34,50	1470	380	260
AIR AKD 125-4T-22	12049	116480	22,00	112	42,50	1470	380	270
AIR AKD 125-4T-22/H	12050	101808	22,00	117	42,50	1470	380	280
AIR AKD 125-4T-30	12051	137760	30,00	114	55,00	1470	380	317
AIR AKD 125-4T-30/H	12052	122080	30,00	116	55,00	1470	380	330
AIR AKD 125-4T-37	12053	137760	37,00	113	67,00	1470	380	420
AIR AKD 125-4T-37/H	12054	118720	37,00	116	67,00	1470	380	437
AIR AKD 125-4T-45	12055	155680	45,00	114	80,00	1470	380	465
AIR AKD 125-4T-45/H	12056	140000	45,00	116	80,00	1470	380	482
AIR AKD 125-4T-55	12057	166880	55,00	116	96,80	1475	380	570
AIR AKD 125-4T-55/H	12058	152320	55,00	115	96,80	1475	380	580

AXIAL TYPE OF SMOKE FANS

AIR AKD-W SERIES



Efectis



*Axial fan Series AIR AKD, suitable for operating temperatures of up to 300 °C / 2 H. 400 °C / 2 H option is available.

*Impeller with adjustable pitch angle for maximum efficiency aluminum hub and blades.

*Resistant to electrostatic powder coated corrosion. Hot dip galvanized steel is available upon request.

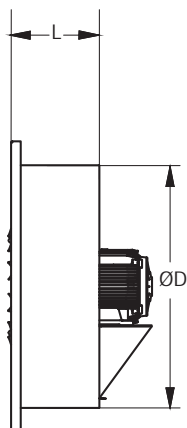
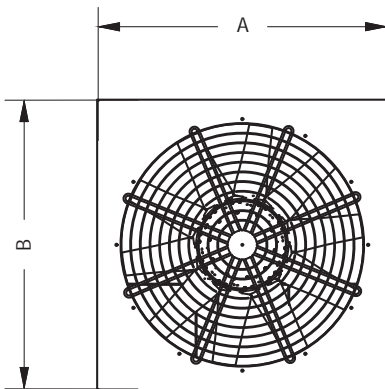
*The motor is speed controllable by frequency converter.

* Efficiency class is IE3. Three-phase 230/400 V 50 Hz

* Usage; suitable for installation on wall. Suitable for outdoor use.



Technical details;



MODELS	DIMENSIONS (mm)			
	A	B	ØD	L
AIR AKD-W 35-2-4T	500	500	355	300
AIR AKD-W 40-2-4T	550	550	400	300
AIR AKD-W 45-2-4T	600	600	450	300
AIR AKD-W 63-2-4T	800	800	630	350
AIR AKD-W 71-2-4T	900	900	710	350
AIR AKD-W 80-2-4T	1000	1000	800	350
AIR AKD-W 90-2-4T	1100	1100	900	350
AIR AKD-W 100-2-4T	1200	1200	1000	350
AIR AKD-W 112-2-4T	1400	1400	1120	350
AIR AKD-W 125-2-4T	1450	1450	1250	350

MODEL	PRODUCT CODE	Airflow (m ³ /h)	PWR (KW)	Sound (dBA)	Current (AMP)	Rotation (RPM)	VOLTAGE (V)	Weight (KG)
AIR AKD-W 35-2T-0,75	53001	6855	0,75	89	1,70	2860	380	32
AIR AKD-W 35-2T-1,1	53002	7975	1,10	87	2,30	2880	380	34
AIR AKD-W 40-2T-1,1	53003	9901	1,10	92	2,30	2880	380	36
AIR AKD-W 40-2T-1,5	53004	10652	1,50	91	3,30	2880	380	41
AIR AKD-W 45-2T-1,5	53005	12432	1,50	92	3,30	2880	380	44
AIR AKD-W 45-2T-2,2	53006	15008	2,20	94	4,50	2870	380	46
AIR AKD-W 63-2T-1,5	53007	16352	1,50	102	3,30	2880	380	57
AIR AKD-W 63-2T-2,2	53008	20048	2,20	97	4,50	2870	380	59
AIR AKD-W 63-2T-3	53009	22400	3,00	96	5,90	2880	380	68
AIR AKD-W 63-2T-4	53010	26656	4,00	96	7,90	2880	380	77
AIR AKD-W 63-2T-5,5	53011	29904	5,50	97	10,30	2900	380	85
AIR AKD-W 63-2T-7,5	53012	35056	7,50	100	13,60	2910	380	90
AIR AKD-W 63-2T-7,5/H	53013	29232	7,50	100	13,60	2910	380	90
AIR AKD-W 71-2T-5,5	53014	34608	5,50	99	10,30	2900	380	88
AIR AKD-W 71-2T-7,5	53015	40768	7,50	100	13,60	2910	380	95
AIR AKD-W 71-2T-11	53016	48048	11,00	102	19,50	2945	380	143
AIR AKD-W 71-2T-11/H	53017	38976	11,00	108	19,50	2945	380	151
AIR AKD-W 71-2T-15	53018	47264	15,00	103	28,50	2945	380	151
AIR AKD-W 80-2T-15	53019	51520	15,00	107	28,50	2945	380	160
AIR AKD-W 80-2T-18,5	53020	58576	18,50	109	32,30	2950	380	186
AIR AKD-W 80-2T-22	53021	63840	22,00	109	38,30	2950	380	217
AIR AKD-W 80-2T-22/H	53022	47824	22,00	110	38,30	2950	380	225
AIR AKD-W 63-4T-1,5	53023	18704	1,50	86	3,50	1430	380	87
AIR AKD-W 63-4T-2,2	53024	23072	2,20	90	5,00	1435	380	89
AIR AKD-W 71-4T-2,2	53025	26768	3,00	89	6,60	1435	380	98
AIR AKD-W 71-4T-3	53026	30240	2,20	91	5,00	1435	380	103
AIR AKD-W 71-4T-4	53027	34272	4,00	93	8,40	1455	380	115
AIR AKD-W 80-4T-3	53028	36064	3,00	91	6,60	1435	380	118
AIR AKD-W 80-4T-4	53029	41104	4,00	98	8,40	1455	380	123
AIR AKD-W 80-4T-5,5	53030	44016	5,50	96	11,20	1465	380	134
AIR AKD-W 80-4T-7,5	53031	46032	7,50	95	15,40	1465	380	147
AIR AKD-W 90-4T-3	53032	39424	3,00	97	6,60	1435	380	132
AIR AKD-W 90-4T-4	53033	46480	4,00	96	8,40	1455	380	142
AIR AKD-W 90-4T-5,5	53034	49952	5,50	96	11,20	1465	380	147
AIR AKD-W 90-4T-7,5	53035	57008	7,50	97	15,40	1465	380	153
AIR AKD-W 100-4T-4	53036	53984	4,00	98	8,40	1455	380	136
AIR AKD-W 100-4T-5,5	53037	52976	5,50	103	11,20	1465	380	148
AIR AKD-W 100-4T-7,5	53038	63392	7,50	102	15,40	1465	380	161
AIR AKD-W 100-4T-11	53039	77840	11,00	102	21,30	1465	380	213
AIR AKD-W 100-4T-11/H	53040	60928	11,00	104	21,30	1465	380	217
AIR AKD-W 112-4T-5,5	53041	66416	5,50	100	11,20	1465	380	153
AIR AKD-W 112-4T-7,5	53042	74928	7,50	100	15,40	1465	380	156
AIR AKD-W 112-4T-11	53043	82096	11,00	102	21,30	1465	380	193
AIR AKD-W 112-4T-15	53044	89152	15,00	103	29,30	1470	380	215
AIR AKD-W 125-4T-11	53045	92176	11,00	109	21,30	1465	380	198
AIR AKD-W 125-4T-15	53046	106960	15,00	108	29,80	1465	380	225
AIR AKD-W 125-4T-15/H	53047	84448	15,00	114	29,80	1465	380	225
AIR AKD-W 125-4T-18,5	53048	115360	18,50	107	34,50	1470	380	262
AIR AKD-W 125-4T-22	53049	116480	22,00	107	42,50	1470	380	273
AIR AKD-W 125-4T-22/H	53050	101808	22,00	112	42,50	1470	380	273
AIR AKD-W 125-4T-30	53051	137760	30,00	109	55,00	1470	380	319
AIR AKD-W 125-4T-30/H	53052	122080	30,00	111	55,00	1470	380	319
AIR AKD-W 125-4T-37	53053	137760	37,00	108	67,00	1470	380	413
AIR AKD-W 125-4T-37/H	53054	118720	37,00	111	67,00	1470	380	413
AIR AKD-W 125-4T-45	53055	155680	45,00	109	80,00	1470	380	468
AIR AKD-W 125-4T-45/H	53056	140000	45,00	111	80,00	1470	380	468
AIR AKD-W 125-4T-55	53057	166880	55,00	111	96,80	1475	380	573
AIR AKD-W 125-4T-55/H	53058	152320	55,00	110	96,80	1475	380	573

MULTIPURPOSE ROOF MOUNTED EXTRACTOR FAN

AIR AKD-R SERIES



*Axial fan Series AIR AKD-R, 400 °C / 2 H option is available.

*Impeller with adjustable pitch angle for maximum efficiency aluminum hub and blades.

*Resistant to electrostatic powder coated corrosion. Hot dip galvanized steel is available upon request.

*Bird control grille.

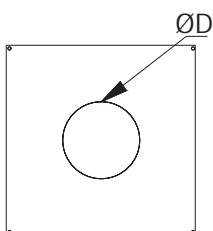
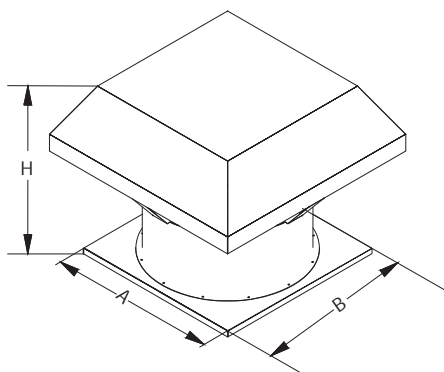
*The motor is speed controllable by frequency converter.

* Efficiency class is IE2. IE3 option is also available.

*Usage; suitable for installation in roof.Suitable for outdoor use.



Technical details;



MODELS	DIMENSIONS (mm)			
	A	B	ØD	H
AIR AKD-R 35-2-4T	500	500	355	500
AIR AKD-R 40-2-4T	550	550	400	500
AIR AKD-R 45-2-4T	600	600	450	600
AIR AKD-R 63-2-4T	800	800	630	700
AIR AKD-R 71-2-4T	900	900	710	700
AIR AKD-R 80-2-4T	1000	1000	800	700
AIR AKD-R 90-2-4T	1100	1100	900	800
AIR AKD-R 100-2-4T	1200	1200	1000	800
AIR AKD-R 112-2-4T	1400	1400	1120	800
AIR AKD-R 125-2-4T	1450	1450	1250	800

MODEL	PRODUCT CODE	Airflow (m ³ /h)	PWR (KW)	Sound (dBA)	Current (AMP)	Rotation (RPM)	VOLTAGE (V)	Weight (KG)
AIR AKD-R 35-2T-0,75	33001	6855	0,75	94	1,70	2860	380	54
AIR AKD-R 35-2T-1,1	33002	7975	1,10	92	2,30	2880	380	56
AIR AKD-R 40-2T-1,1	33003	9901	1,10	97	2,30	2880	380	62
AIR AKD-R 40-2T-1,5	33004	10652	1,50	96	3,30	2880	380	66
AIR AKD-R 45-2T-1,5	33005	12432	1,50	97	3,30	2880	380	71
AIR AKD-R 45-2T-2,2	33006	15008	2,20	99	4,50	2870	380	74
AIR AKD-R 63-2T-1,5	33007	16352	1,50	107	3,30	2880	380	101
AIR AKD-R 63-2T-2,2	33008	20048	2,20	102	4,50	2870	380	104
AIR AKD-R 63-2T-3	33009	22400	3,00	101	5,90	2880	380	113
AIR AKD-R 63-2T-4	33010	26656	4,00	101	7,90	2880	380	121
AIR AKD-R 63-2T-5,5	33011	29904	5,50	102	10,30	2900	380	128
AIR AKD-R 63-2T-7,5	33012	35056	7,50	105	13,60	2910	380	134
AIR AKD-R 63-2T-7,5/H	33013	29232	7,50	105	13,60	2910	380	134
AIR AKD-R 71-2T-5,5	33014	34608	5,50	104	10,30	2900	380	144
AIR AKD-R 71-2T-7,5	33015	40768	7,50	105	13,60	2910	380	152
AIR AKD-R 71-2T-11	33016	48048	11,00	107	19,50	2945	380	202
AIR AKD-R 71-2T-11/H	33017	38976	11,00	113	19,50	2945	380	202
AIR AKD-R 71-2T-15	33018	47264	15,00	108	28,50	2945	380	210
AIR AKD-R 80-2T-15	33019	51520	15,00	112	28,50	2945	380	228
AIR AKD-R 80-2T-18,5	33020	58576	18,50	114	32,30	2950	380	260
AIR AKD-R 80-2T-22	33021	63840	22,00	114	38,30	2950	380	295
AIR AKD-R 80-2T-22/H	33022	47824	22,00	115	38,30	2950	380	300
AIR AKD-R 63-4T-1,5	33023	18704	1,50	91	3,50	1430	380	128
AIR AKD-R 63-4T-2,2	33024	23072	2,20	95	5,00	1435	380	134
AIR AKD-R 71-4T-2,2	33025	26768	3,00	94	6,60	1435	380	154
AIR AKD-R 71-4T-3	33026	30240	2,20	96	5,00	1435	380	162
AIR AKD-R 71-4T-4	33027	34272	4,00	98	8,40	1455	380	170
AIR AKD-R 80-4T-3	33028	36064	3,00	96	6,60	1435	380	182
AIR AKD-R 80-4T-4	33029	41104	4,00	103	8,40	1455	380	188
AIR AKD-R 80-4T-5,5	33030	44016	5,50	101	11,20	1465	380	200
AIR AKD-R 80-4T-7,5	33031	46032	7,50	100	15,40	1465	380	214
AIR AKD-R 90-4T-3	33032	39424	3,00	102	6,60	1435	380	212
AIR AKD-R 90-4T-4	33033	46480	4,00	101	8,40	1455	380	222
AIR AKD-R 90-4T-5,5	33034	49952	5,50	101	11,20	1465	380	229
AIR AKD-R 90-4T-7,5	33035	57008	7,50	102	15,40	1465	380	234
AIR AKD-R 100-4T-4	33036	53984	4,00	103	8,40	1455	380	228
AIR AKD-R 100-4T-5,5	33037	52976	5,50	108	11,20	1465	380	237
AIR AKD-R 100-4T-7,5	33038	63392	7,50	107	15,40	1465	380	259
AIR AKD-R 100-4T-11	33039	77840	11,00	107	21,30	1465	380	300
AIR AKD-R 100-4T-11/H	33040	60928	11,00	109	21,30	1465	380	300
AIR AKD-R 112-4T-5,5	33041	66416	5,50	105	11,20	1465	380	258
AIR AKD-R 112-4T-7,5	33042	74928	7,50	105	15,40	1465	380	262
AIR AKD-R 112-4T-11	33043	82096	11,00	107	21,30	1465	380	305
AIR AKD-R 112-4T-15	33044	89152	15,00	108	29,30	1470	380	335
AIR AKD-R 125-4T-11	33045	92176	11,00	114	21,30	1465	380	318
AIR AKD-R 125-4T-15	33046	106960	15,00	113	29,80	1465	380	345
AIR AKD-R 125-4T-15/H	33047	84448	15,00	119	29,80	1465	380	345
AIR AKD-R 125-4T-18,5	33048	115360	18,50	112	34,50	1470	380	395
AIR AKD-R 125-4T-22	33049	116480	22,00	112	42,50	1470	380	405
AIR AKD-R 125-4T-22/H	33050	101808	22,00	117	42,50	1470	380	405
AIR AKD-R 125-4T-30	33051	137760	30,00	114	55,00	1470	380	442
AIR AKD-R 125-4T-30/H	33052	122080	30,00	116	55,00	1470	380	447
AIR AKD-R 125-4T-37	33053	137760	37,00	113	67,00	1470	380	527
AIR AKD-R 125-4T-37/H	33054	118720	37,00	116	67,00	1470	380	535
AIR AKD-R 125-4T-45	33055	155680	45,00	114	80,00	1470	380	565
AIR AKD-R 125-4T-45/H	33056	140000	45,00	116	80,00	1470	380	570
AIR AKD-R 125-4T-55	33057	166880	55,00	116	96,80	1475	380	670
AIR AKD-R 125-4T-55/H	33058	152320	55,00	115	96,80	1475	380	680

AXIAL FANS WITH ACOUSTICALLY INSULATED BOX

AIR AKD-H SERIES



Efectis



*Axial fan Series AIR AKD-H, suitable for operating temperatures of up to 300 °C / 2 H .400 °C / 2 H option is available.

*Impeller with adjustable pitch angle for maximum efficiency aluminum hub and blades.

*Resistant to electrostatic powder coated corrosion. Hot dip galvanized steel is available upon request.

*Cell panels are made of double-walled galvanized and are available in 5 cm and 10 cm thickness. Glass wool or stone wool options are available as insulation material in the panel.

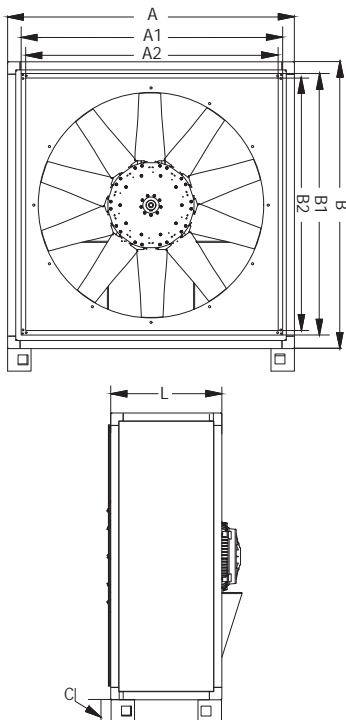
*The motor is speed controllable by frequency converter.

* Efficiency class is IE3.

*Usage; suitable for installation in ducts.Suitable for outdoor use.



Technical details;



MODELS	DIMENSIONS (mm)							
	A	A1	A2	B	B1	B2	L	C
AIR AKD-H 35-2-4T	580	550	500	580	550	500	350	125
AIR AKD-H 40-2-4T	630	600	550	630	600	550	400	125
AIR AKD-H 45-2-4T	680	650	600	680	650	600	400	125
AIR AKD-H 63-2-4T	880	850	800	880	850	800	550	125
AIR AKD-H 71-2-4T	980	950	900	980	950	900	550	125
AIR AKD-H 80-2-4T	1080	1050	1000	1080	1050	1000	550	125
AIR AKD-H 90-2-4T	1280	1250	1200	1280	1250	1200	650	125
AIR AKD-H 100-2-4T	1380	1350	1300	1380	1350	1300	650	125
AIR AKD-H 112-2-4T	1480	1450	1400	1480	1450	1400	650	125
AIR AKD-H 125-2-4T	1480	1450	1400	1480	1450	1400	650	125

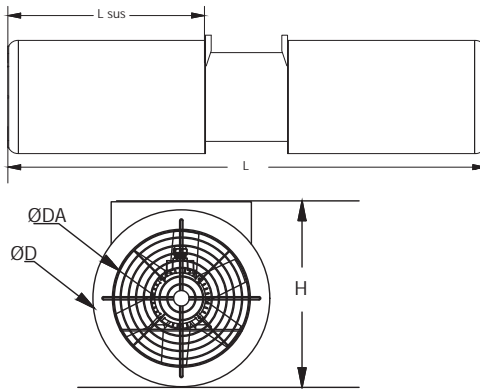
MODEL	PRODUCT CODE	Airflow (m ³ /h)	PWR (KW)	Sound (dBA)	Current (AMP)	Rotation (RPM)	VOLTAGE (V)	Weight (KG)
AIR AKD-H 35-2T-0,75	22001	6855	0,75	84	1,70	2860	380	70
AIR AKD-H 35-2T-1,1	22002	7975	1,10	82	2,30	2880	380	72
AIR AKD-H 40-2T-1,1	22003	9901	1,10	87	2,30	2880	380	74
AIR AKD-H 40-2T-1,5	22004	10652	1,50	86	3,30	2880	380	78
AIR AKD-H 45-2T-1,5	22005	12432	1,50	87	3,30	2880	380	100
AIR AKD-H 45-2T-2,2	22006	15008	2,20	89	4,50	2870	380	103
AIR AKD-H 63-2T-1,5	22007	16352	1,50	97	3,30	2880	380	145
AIR AKD-H 63-2T-2,2	22008	20048	2,20	92	4,50	2870	380	148
AIR AKD-H 63-2T-3	22009	22400	3,00	91	5,90	2880	380	157
AIR AKD-H 63-2T-4	22010	26656	4,00	91	7,90	2880	380	165
AIR AKD-H 63-2T-5,5	22011	29904	5,50	92	10,30	2900	380	172
AIR AKD-H 63-2T-7,5	22012	35056	7,50	95	13,60	2910	380	178
AIR AKD-H 63-2T-7,5/H	22013	29232	7,50	95	13,60	2910	380	178
AIR AKD-H 71-2T-5,5	22014	34608	5,50	94	10,30	2900	380	187
AIR AKD-H 71-2T-7,5	22015	40768	7,50	95	13,60	2910	380	192
AIR AKD-H 71-2T-11	22016	48048	11,00	97	19,50	2945	380	242
AIR AKD-H 71-2T-11/H	22017	38976	11,00	103	19,50	2945	380	250
AIR AKD-H 71-2T-15	22018	47264	15,00	98	28,50	2945	380	250
AIR AKD-H 80-2T-15	22019	51520	15,00	102	28,50	2945	380	250
AIR AKD-H 80-2T-18,5	22020	58576	18,50	104	32,30	2950	380	280
AIR AKD-H 80-2T-22	22021	63840	22,00	104	38,30	2950	380	315
AIR AKD-H 80-2T-22/H	22022	47824	22,00	105	38,30	2950	380	320
AIR AKD-H 63-4T-1,5	22023	18704	1,50	81	3,50	1430	380	172
AIR AKD-H 63-4T-2,2	22024	23072	2,20	85	5,00	1435	380	178
AIR AKD-H 71-4T-2,2	22025	26768	3,00	84	6,60	1435	380	207
AIR AKD-H 71-4T-3	22026	30240	2,20	86	5,00	1435	380	214
AIR AKD-H 71-4T-4	22027	34272	4,00	88	8,40	1455	380	220
AIR AKD-H 80-4T-3	22028	36064	3,00	86	6,60	1435	380	227
AIR AKD-H 80-4T-4	22029	41104	4,00	93	8,40	1455	380	235
AIR AKD-H 80-4T-5,5	22030	44016	5,50	91	11,20	1465	380	245
AIR AKD-H 80-4T-7,5	22031	46032	7,50	90	15,40	1465	380	251
AIR AKD-H 90-4T-3	22032	39424	3,00	92	6,60	1435	380	262
AIR AKD-H 90-4T-4	22033	46480	4,00	91	8,40	1455	380	272
AIR AKD-H 90-4T-5,5	22034	49952	5,50	91	11,20	1465	380	280
AIR AKD-H 90-4T-7,5	22035	57008	7,50	92	15,40	1465	380	285
AIR AKD-H 100-4T-4	22036	53984	4,00	93	8,40	1455	380	283
AIR AKD-H 100-4T-5,5	22037	52976	5,50	98	11,20	1465	380	291
AIR AKD-H 100-4T-7,5	22038	63392	7,50	97	15,40	1465	380	300
AIR AKD-H 100-4T-11	22039	77840	11,00	97	21,30	1465	380	350
AIR AKD-H 100-4T-11/H	22040	60928	11,00	99	21,30	1465	380	350
AIR AKD-H 112-4T-5,5	22041	66416	5,50	95	11,20	1465	380	311
AIR AKD-H 112-4T-7,5	22042	74928	7,50	95	15,40	1465	380	313
AIR AKD-H 112-4T-11	22043	82096	11,00	97	21,30	1465	380	363
AIR AKD-H 112-4T-15	22044	89152	15,00	98	29,30	1470	380	383
AIR AKD-H 125-4T-11	22045	92176	11,00	104	21,30	1465	380	381
AIR AKD-H 125-4T-15	22046	106960	15,00	103	29,80	1465	380	391
AIR AKD-H 125-4T-15/H	22047	84448	15,00	109	29,80	1465	380	391
AIR AKD-H 125-4T-18,5	22048	115360	18,50	102	34,50	1470	380	430
AIR AKD-H 125-4T-22	22049	116480	22,00	102	42,50	1470	380	440
AIR AKD-H 125-4T-22/H	22050	101808	22,00	107	42,50	1470	380	440
AIR AKD-H 125-4T-30	22051	137760	30,00	104	55,00	1470	380	472
AIR AKD-H 125-4T-30/H	22052	122080	30,00	106	55,00	1470	380	472
AIR AKD-H 125-4T-37	22053	137760	37,00	103	67,00	1470	380	557
AIR AKD-H 125-4T-37/H	22054	118720	37,00	106	67,00	1470	380	557
AIR AKD-H 125-4T-45	22055	155680	45,00	104	80,00	1470	380	595
AIR AKD-H 125-4T-45/H	22056	140000	45,00	106	80,00	1470	380	595
AIR AKD-H 125-4T-55	22057	166880	55,00	106	96,80	1475	380	670
AIR AKD-H 125-4T-55/H	22058	152320	55,00	105	96,80	1475	380	670

AXIAL JET FAN

AIR AJD SERIES



Technical details;



* One-way or reversible fan unit including fan, silencers, and support. Approved for smoke extraction in accordance with standard EN 12101-3.

* Adjustable impellers in cast aluminium.

* Adjustable rotors made of cast aluminium and designed to produce great thrusts.

* Three-phase 400V-50Hz.

* Anti-contact protective grille pursuant to standard UNE-EN ISO 12499

* Two Speed and double air flow directions available.

* High attenuation silencers with thermal and acoustic insulation.

* Class H motors. S1 continuous operation and S2 emergency use, with ball bearings, IP55 protection and 2 speeds.

* Maximum temperature of air to be carried: S1 continuous operation -20°C +40°C. S2 operation 300°C/2h.

MODELS	DIMENSIONS (mm)				
	Lsus	ØD	ØDA	H	L
AIR AJD 31-2/4T	750	415	315	505	1900
AIR AJD 35-2/4T	750	455	355	545	1900
AIR AJD 40-2/4T	750	500	400	590	1900
AIR AJD 45-2/4T	750	550	450	640	1900
AIR AJD-R 31-2/4T	750	415	315	505	1900
AIR AJD-R 35-2/4T	750	455	355	545	1900
AIR AJD-R 40-2/4T	750	500	400	590	1900
AIR AJD-R 45-2/4T	750	550	450	640	1900

MODEL	PRODUCT CODE	Airflow (m³/h)	PWR (KW)	THRUST (N)	Current (AMP)	Rotation (RPM)	VOLTAGE (V)	Weight (KG)
AIR AJD 31-2/4T	71001	4.800/2.400	0,75/0,18	35 /9	1,8	2790	380	60
AIR AJD 35-2/4T	71002	7.200/3.600	1,3/0,33	58 /14	3,3	2860	380	65
AIR AJD 40-2/4T	71003	9.800/4.900	2/0,5	75 /18	4,5	2835	380	70
AIR AJD 45-2/4T	71004	12.800/6.400	2/0,5	87 /25	4,5	2835	380	75
AIR AJD-R 31-2/4T	71005	4.800/2.400	0,75/0,18	35 /9	1,8	2790	380	60
AIR AJD-R 35-2/4T	71006	7.200/3.600	1,3/0,33	58 /14	3,3	2860	380	65
AIR AJD-R 40-2/4T	71007	9.800/4.900	2/0,5	75 /18	4,5	2835	380	70
AIR AJD-R 45-2/4T	71008	12.800/6.400	2/0,5	87 /25	4,5	2835	380	75

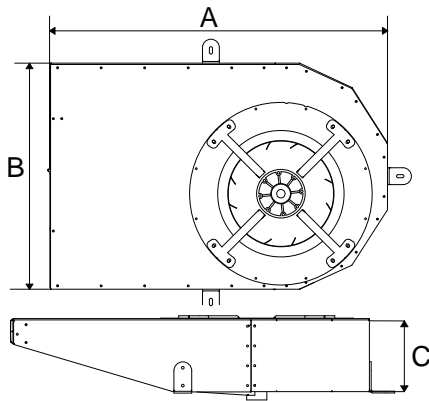
RADIAL TYPE OF JET FAN

AIR CI SERIES



- * Galvanized Sheet steel casing.
- * Backward-curved impeller in extremely robust sheet steel.
- * Anti-contact protective grille pursuant to standard UNE-EN ISO 12499.
- * Three-phase 230/400V-50Hz.
- * Standard double speed motor with Class H protection 300C/2H fire resistance.
- * Maximum temperature of air to be carried: S1 continuous operation -20°C +40°C. S2 operation 300°C/2h.

Technical details;



MODELS	DIMENSIONS (mm)		
	A	B	C
AIR CI 50-4/8T	1200	800	280
AIR CI 75-4/8T	1400	1000	300

MODEL	PRODUCT CODE	Airflow (m ³ /h)	PWR (KW)	THRUST (N)	Current (AMP)	Rotation (RPM)	VOLTAGE (V)	Weight (KG)
AIR CI 50-4/8T	81001	6.840/3.420	1,1/0,37	63 /28	2,6	1410	380	80
AIR CI 75-4/8T	81002	8.000/4.000	2,2/0,55	75 /19	5,0	1415	380	100

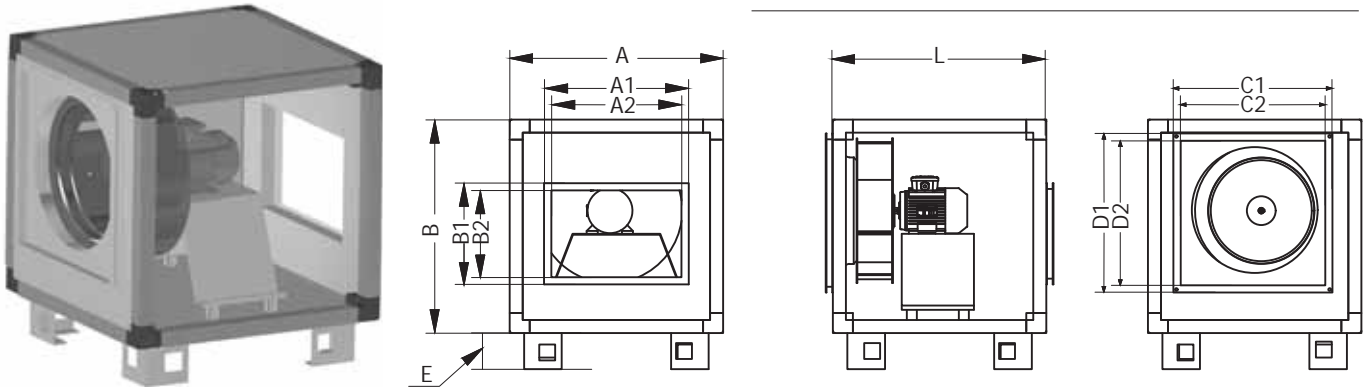
RHD SERIES



* Aluminium profile structure with galvanized body panels.

- Covers with a high quality, 50 mm thick acoustic casing made of prefinished sheet.
- Backward curved impeller.
- Moduler case allows changable air stream positions
- IE3 efficiency AC motors.
- Class F motors with ball bearings and IP55 protection.
- Three-phase 230/400 V 50 Hz.
- Standard working temperature: -25 °C +60 °C optional working temperature up to 120.°C

MODEL	PRODUCT CODE	Airflow (m ³ /h)	PWR (KW)	Sound (dBA)	Current (AMP)	Rotation (RPM)	VOLTAGE (V)	Weight (KG)
RHD 315-2T-1,1	61001	4500	1,10	88	2,3	2900	380	130
RHD 355-2T-2,2	61002	6980	2,20	89	4,5	2900	380	165
RHD 400-2T-4	61003	9800	4,00	92	7,9	2920	380	181
RHD 450-2T-7,5	61004	13800	7,50	90	13,6	2925	380	210
RHD 315-4T-0,37	61005	2450	0,37	74	1,2	1390	380	120
RHD 355-4T-0,37	61006	3650	0,37	73	1,2	1390	380	150
RHD 400-4T-0,55	61007	4550	0,55	76	1,6	1385	380	165
RHD 450-4T-0,75	61008	6600	0,75	74	1,7	1445	380	178
RHD 500-4T-1,5	61009	9180	1,50	78	3,5	1449	380	220
RHD 560-4T-3	61010	13300	3,00	87	6,2	1446	380	258
RHD 630-4T-5,5	61011	18000	5,50	90	10,6	1467	380	300
RHD 710-4T-7,5	61012	27200	7,50	94	15,2	1467	380	375
RHD 710-4T-11	61013	28150	11,00	93	21,0	1470	380	390
RHD 800-4T-15	61014	37900	15,00	94	30,9	1477	380	570
RHD 800-4T-18,5	61015	39350	18,50	95	39,5	1474	380	590
RHD 900-4T-22	61016	52300	22,00	97	41,6	1475	380	678
RHD 1000-4T-37	61017	71650	37,00	100	68,6	1475	380	880

Technical details;


MODELS	DIMENSIONS (mm)											E
	A	A1	A2	B1	B2	B	C1	C2	D1	D2	L	
RHD 315-2T-1,1	650	450	400	350	300	650	350	300	350	300	900	125
RHD 355-2T-2,2	750	500	450	350	300	750	400	350	400	350	950	125
RHD 400-2T-4	800	550	500	350	300	800	450	400	450	400	1000	125
RHD 450-2T-7,5	900	650	600	450	400	900	500	450	500	450	1050	125
RHD 315-4T-0,37	650	450	400	350	300	650	350	300	350	300	900	125
RHD 355-4T-0,37	750	500	450	350	300	750	400	350	400	350	950	125
RHD 400-4T-0,55	800	550	500	350	300	800	450	400	450	400	1000	125
RHD 450-4T-0,75	900	650	600	450	400	900	500	450	500	450	1050	125
RHD 500-4T-1,5	1000	650	600	450	400	1000	550	500	550	500	1200	125
RHD 560-4T-3	1100	850	800	550	500	1100	650	600	650	600	1300	125
RHD 630-4T-5,5	1250	850	800	550	500	1250	650	600	650	600	1400	125
RHD 710-4T-7,5	1400	950	900	650	600	1400	750	700	750	700	1500	125
RHD 710-4T-11	1400	950	900	650	600	1400	750	700	750	700	1500	125
RHD 800-4T-15	1600	1050	1000	650	600	1600	850	800	850	800	1700	125
RHD 800-4T-18,5	1600	1050	1000	650	600	1600	850	800	850	800	1700	125
RHD 900-4T-22	1800	1250	1200	650	600	1800	950	900	950	900	2000	125
RHD 900-4T-30	1800	1250	1200	650	600	1800	950	900	950	900	2000	125
RHD 1000-4T-37	2000	1350	1300	750	700	2000	1050	1000	1050	1000	2200	125

CELL TYPE RADIAL SHELTER FAN

RHD-SS SERIES



* Aluminium profile structure with galvanized body pannels.

• Covers with a high quality, 50 mm thick acoustic casing made of prefinished sheet.

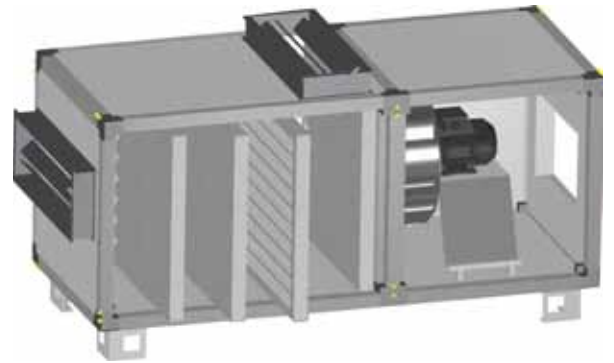
• Backward curved impeller.

• Internal G4 filter, Radioactive type H13 hepa filter and active carbon filter, other filters can be use by optional.

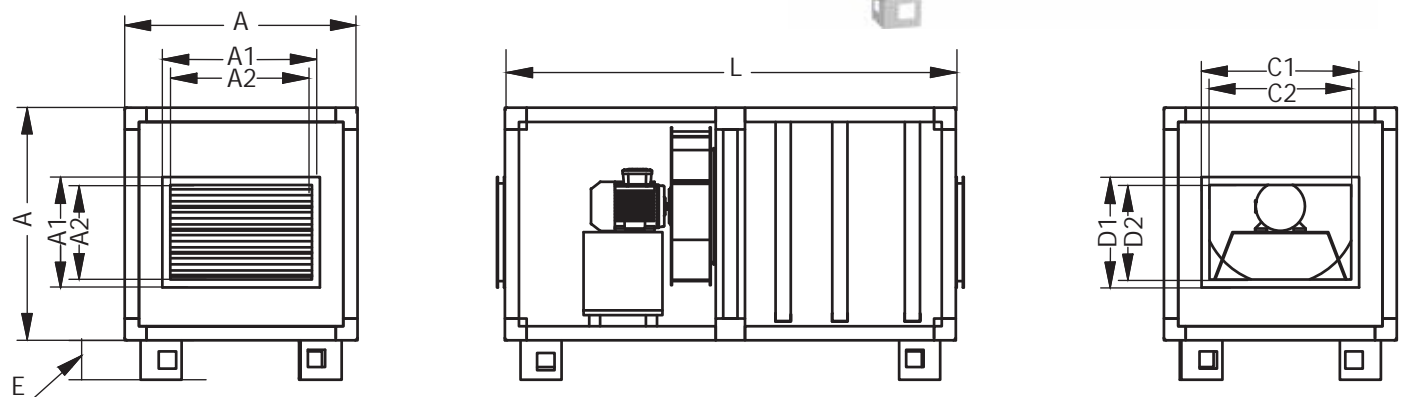
* Internal router dampers available using by- pass air stream around the filters.

• IE3 efficiency AC motors.

MODELS	DIMENSIONS (mm)											
	A	A1	A2	B1	B2	B	C1	C2	D1	D2	L	"G4-HEPA-ACTIVE FILTER DIMENSIONS"
RHD-SS 315-2T-1,1	650	450	400	350	300	650	350	300	350	300	1500	595*530
RHD-SS 355-2T-2,2	750	500	450	350	300	750	400	350	400	350	1550	695*630
RHD-SS 400-2T-4	800	550	500	350	300	800	450	400	450	400	1600	745*680
RHD-SS 450-2T-7,5	900	650	600	450	400	900	500	450	500	450	1650	845*780
RHD-SS 315-4T-0,37	650	450	400	350	300	650	350	300	350	300	1500	595*530
RHD-SS 355-4T-0,37	750	500	450	350	300	750	400	350	400	350	1550	695*630
RHD-SS 400-4T-0,55	800	550	500	350	300	800	450	400	450	400	1600	745*680
RHD-SS 450-4T-0,75	900	650	600	450	400	900	500	450	500	450	1650	845*780
RHD-SS 500-4T-1,5	1000	650	600	450	400	1000	550	500	550	500	1700	945*880
RHD-SS 560-4T-3	1100	850	800	550	500	1100	650	600	650	600	1800	1045*980
RHD-SS 630-4T-5,5	1250	850	800	550	500	1250	650	600	650	600	1900	1195*1130
RHD-SS 710-4T-7,5	1400	950	900	650	600	1400	750	700	750	700	2000	1345*1280
RHD-SS 710-4T-11	1400	950	900	650	600	1400	750	700	750	700	2000	1345*1280
RHD-SS 800-4T-15	1600	1050	1000	650	600	1600	850	800	850	800	2000	1545*1480
RHD-SS 800-4T-18,5	1600	1050	1000	650	600	1600	850	800	850	800	2000	1545*1480
RHD-SS 900-4T-22	1800	1250	1200	650	600	1800	950	900	950	900	2200	1745*1680
RHD-SS 900-4T-30	1800	1250	1200	650	600	1800	950	900	950	900	2200	1745*1680
RHD-SS 1000-4T-37	2000	1350	1300	750	700	2000	1050	1000	1050	1000	2400	1945*1880



Technical details;



MODEL	PRODUCT CODE	Airflow (m³/h)	PWR (KW)	Sound (dBA)	Current (AMP)	Rotation (RPM)	VOLTAGE (V)	Weight (KG)
RHD-SS 315-2T-1,1	62001	4500	1,10	88	2,3	2900	380	180
RHD-SS 355-2T-2,2	62002	6980	2,20	89	4,5	2900	380	222
RHD-SS 400-2T-4	62003	9800	4,00	92	7,9	2920	380	251
RHD-SS 450-2T-7,5	62004	13800	7,50	90	13,6	2925	380	290
RHD-SS 315-4T-0,37	62005	2450	0,37	74	1,2	1390	380	170
RHD-SS 355-4T-0,37	62006	3650	0,37	73	1,2	1390	380	210
RHD-SS 400-4T-0,55	62007	4550	0,55	76	1,6	1385	380	225
RHD-SS 450-4T-0,75	62008	6600	0,75	74	1,7	1445	380	235
RHD-SS 500-4T-1,5	62009	9180	1,50	78	3,5	1449	380	320
RHD-SS 560-4T-3	62010	13300	3,00	87	6,2	1446	380	358
RHD-SS 630-4T-5,5	62011	18000	5,50	90	10,6	1467	380	416
RHD-SS 710-4T-7,5	62012	27200	7,50	94	15,2	1467	380	495
RHD-SS 710-4T-11	62013	28150	11,00	93	21,0	1470	380	515
RHD-SS 800-4T-15	62014	37900	15,00	94	30,9	1477	380	676
RHD-SS 800-4T-18,5	62015	39350	18,50	95	39,5	1474	380	690
RHD-SS 900-4T-22	62016	52300	22,00	97	41,6	1475	380	778
RHD-SS 1000-4T-37	62017	71650	37,00	100	68,6	1475	380	1050

AXIAL TYPE EXPLOSION PROOF FAN

AIR HCT SERIES



*Impeller with adjustable pitch angle for maximum efficiency aluminum hub and blades.

*Aluminium anti-spark ring.

*Resistant to electrostatic powder coated corrosion.

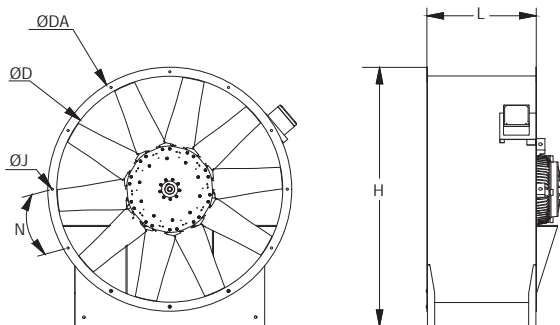
*The motor is speed controllable by frequency converter.

* Products are fully ATEX certified.

* Standard production class is EX IIG IIC T4.

*Usage; suitable for installation in ducts.Suitable for outdoor use.

Technical details;



MODELS	DIMENSIONS (mm)					
	ØD	ØDA	L	H	ØJ	N
AIR HCT 31-2-4T	315	415	330	505	14	8x45°
AIR HCT 35-2-4T	355	455	330	545	14	8x45°
AIR HCT 40-2-4T	400	500	330	590	14	8x45°
AIR HCT 45-2-4T	450	550	330	640	14	8x45°
AIR HCT 63-2-4T	630	730	500	820	14	12x30°
AIR HCT 71-2-4T	710	810	500	900	14	12x30°
AIR HCT 80-2-4T	800	900	500	990	14	12x30°
AIR HCT 90-2-4T	900	1000	600	1090	14	16x22,5°
AIR HCT 100-2-4T	1000	1100	600	1190	14	16x22,5°
AIR HCT 112-2-4T	1120	1220	600	1310	14	16x22,5°

MODEL	PRODUCT CODE	Airflow (m ³ /h)	PWR (KW)	Sound (dBA)	Current (AMP)	Rotation (RPM)	VOLTAGE (V)	Weight (KG)
AIR HCT 31-2T-0,18	15001	3157	0,18	85	0,65	2785	380	20
AIR HCT 31-2T-0,25	15002	3740	0,25	86	0,70	2755	380	21
AIR HCT 35-2T-0,37	15003	4664	0,37	83	1,10	2760	380	23
AIR HCT 40-2T-0,55	15004	5962	0,55	91	1,45	2760	380	27
AIR HCT 40-2T-0,75	15005	7315	0,75	88	1,85	2800	380	30
AIR HCT 45-2T-0,75	15006	8459	0,75	95	1,85	2800	380	32
AIR HCT 45-2T-1,1	15007	12100	1,10	92	2,60	2790	380	33
AIR HCT 45-2T-1,5	15008	12100	1,50	91	3,25	2865	380	36
AIR HCT 45-2T-2,2	15009	14740	2,20	94	4,75	2875	380	38
AIR HCT 63-2T-2,2	15010	19800	2,20	97	4,75	2875	380	50
AIR HCT 63-2T-3	15011	22000	3,00	96	6,45	2875	380	57
AIR HCT 63-2T-4	15012	26070	4,00	96	7,50	2865	380	64
AIR HCT 71-2T-5,5	15013	33880	5,50	99	9,80	2890	380	70
AIR HCT 71-2T-7,5	15014	39270	7,50	100	13,60	2910	380	74
AIR HCT 71-2T-11	15015	45650	11,00	101	19,50	2945	380	80
AIR HCT 35-4T-0,12	15016	3729	0,12	71	0,65	1380	380	21
AIR HCT 40-4T-0,18	15017	5181	0,18	73	0,75	1330	380	24
AIR HCT 40-4T-0,25	15018	5544	0,25	76	1,05	1320	380	25
AIR HCT 45-4T-0,37	15019	7766	0,37	80	1,35	1425	380	29
AIR HCT 45-4T-0,55	15020	8822	0,55	79	1,50	1690	380	31
AIR HCT 63-4T-1,1	15021	15290	1,10	85	2,80	1705	380	50
AIR HCT 63-4T-1,5	15022	20350	1,50	86	3,55	1700	380	52
AIR HCT 63-4T-2,2	15023	22990	2,20	89	4,90	1715	380	59
AIR HCT 71-4T-3	15024	29590	3,00	91	7,70	1710	380	68
AIR HCT 71-4T-4	15025	32340	4,00	93	8,50	1735	380	72
AIR HCT 80-4T-3	15026	35200	3,00	91	6,60	1435	380	76
AIR HCT 80-4T-4	15027	40040	4,00	93	8,20	1455	380	80
AIR HCT 80-4T-5,5	15028	43120	5,50	95	11,20	1465	380	92
AIR HCT 90-4T-3	15029	38500	3,00	96	6,60	1435	380	94
AIR HCT 90-4T-4	15030	45320	4,00	96	8,20	1455	380	98
AIR HCT 90-4T-5,5	15031	47410	5,50	95	11,20	1465	380	110
AIR HCT 90-4T-7,5	15032	55110	7,50	101	15,40	1465	380	120
AIR HCT 100-4T-5,5	15033	55330	5,50	97	11,20	1465	380	118
AIR HCT 100-4T-7,5	15034	62480	7,50	99	15,40	1465	380	128
AIR HCT 112-4T-5,5	15035	59070	5,50	102	11,20	1465	380	127
AIR HCT 112-4T-7,5	15036	75680	7,50	100	15,40	1465	380	139

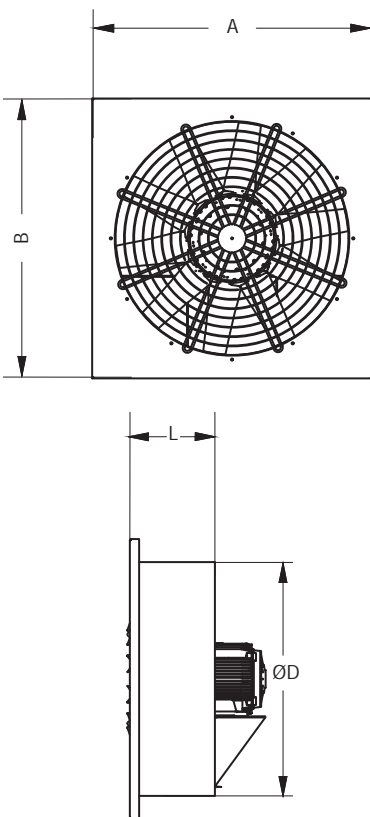
WALL TYPE AXIAL EXPLOSION PROOF FAN

AIR HC SERIES



- * Impeller with adjustable pitch angle for maximum efficiency aluminum hub and blades. Aluminium anti-spark ring.
- * Resistant to electrostatic powder coated corrosion. Hot dip galvanized steel is available upon request.
- * The motor is speed controllable by frequency converter.
- * Optional square mounting console and round mounting console options are available.
- * Products are fully ATEX certified.
- * Exproof Protection Class: EX IIG IIC T6.
- * Suitable for outdoor use.

Technical details;



MODELS	DIMENSIONS (mm)			
	A	B	L	ØD
AIR HC 31-2-4T	500	500	300	315
AIR HC 35-2-4T	500	500	300	355
AIR HC 40-2-4T	550	550	300	400
AIR HC 45-2-4T	600	600	300	450
AIR HC 63-2-4T	800	800	350	630
AIR HC 71-2-4T	900	900	350	710
AIR HC 80-2-4T	1000	1000	350	800
AIR HC 90-2-4T	1100	1100	350	900
AIR HC 100-2-4T	1200	1200	350	1000
AIR HC 112-2-4T	1400	1400	350	1120

MODEL	PRODUCT CODE	Airflow (m ³ /h)	PWR (KW)	Sound (dBA)	Current (AMP)	Rotation (RPM)	VOLTAGE (V)	Weight (KG)
AIR HC 31-2T-0,18	52001	3157	0,18	85	0,65	2785	380	22
AIR HC 31-2T-0,25	52002	3740	0,25	86	0,70	2755	380	23
AIR HC 35-2T-0,37	52003	4664	0,37	83	1,10	2760	380	26
AIR HC 40-2T-0,55	52004	5962	0,55	91	1,45	2760	380	30
AIR HC 40-2T-0,75	52005	7315	0,75	88	1,85	2800	380	33
AIR HC 45-2T-0,75	52006	8459	0,75	95	1,85	2800	380	36
AIR HC 45-2T-1,1	52007	12100	1,10	92	2,60	2790	380	37
AIR HC 45-2T-1,5	52008	12100	1,50	91	3,25	2865	380	40
AIR HC 45-2T-2,2	52009	14740	2,20	94	4,75	2875	380	42
AIR HC 63-2T-2,2	52010	19800	2,20	97	4,75	2875	380	55
AIR HC 63-2T-3	52011	22000	3,00	96	6,45	2875	380	62
AIR HC 63-2T-4	52012	26070	4,00	96	7,50	2865	380	68
AIR HC 71-2T-5,5	52013	33880	5,50	99	9,80	2890	380	75
AIR HC 71-2T-7,5	52014	39270	7,50	100	13,60	2910	380	79
AIR HC 71-2T-11	52015	45650	11,00	101	19,50	2945	380	85
AIR HC 35-4T-0,12	52016	3729	0,12	71	0,65	1380	380	23
AIR HC 40-4T-0,18	52017	5181	0,18	73	0,75	1330	380	27
AIR HC 40-4T-0,25	52018	5544	0,25	76	1,05	1320	380	28
AIR HC 45-4T-0,37	52019	7766	0,37	80	1,35	1425	380	33
AIR HC 45-4T-0,55	52020	8822	0,55	79	1,50	1690	380	35
AIR HC 63-4T-1,1	52021	15290	1,10	85	2,80	1705	380	55
AIR HC 63-4T-1,5	52022	20350	1,50	86	3,55	1700	380	57
AIR HC 63-4T-2,2	52023	22990	2,20	89	4,90	1715	380	64
AIR HC 71-4T-3	52024	29590	3,00	91	7,70	1710	380	73
AIR HC 71-4T-4	52025	32340	4,00	93	8,50	1735	380	77
AIR HC 80-4T-3	52026	35200	3,00	91	6,60	1435	380	82
AIR HC 80-4T-4	52027	40040	4,00	93	8,20	1455	380	86
AIR HC 80-4T-5,5	52028	43120	5,50	95	11,20	1465	380	96
AIR HC 90-4T-3	52029	38500	3,00	96	6,60	1435	380	100
AIR HC 90-4T-4	52030	45320	4,00	96	8,20	1455	380	104
AIR HC 90-4T-5,5	52031	47410	5,50	95	11,20	1465	380	116
AIR HC 90-4T-7,5	52032	55110	7,50	101	15,40	1465	380	126
AIR HC 100-4T-5,5	52033	55330	5,50	97	11,20	1465	380	124
AIR HC 100-4T-7,5	52034	62480	7,50	99	15,40	1465	380	134
AIR HC 112-4T-5,5	52035	59070	5,50	102	11,20	1465	380	133
AIR HC 112-4T-7,5	52036	75680	7,50	100	15,40	1465	380	145

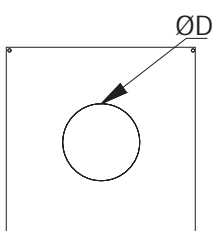
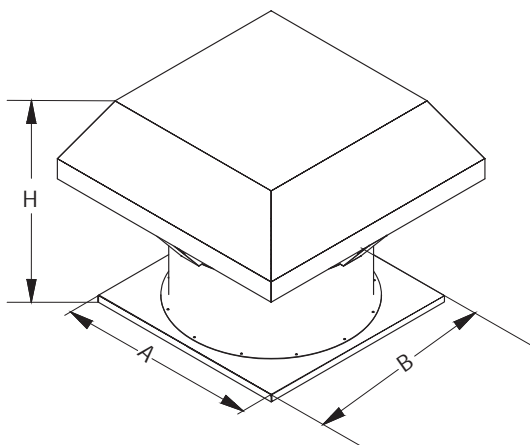
ROOF TYPE AXIAL EXPROOF FAN

AIR HCT-R SERIES



- *Impeller with adjustable pitch angle for maximum efficiency aluminum hub and blades. Aluminium anti-spark ring.
- *Resistant to electrostatic powder coated corrosion. Hot dip galvanized steel is available upon request.
- *The motor is speed controllable by frequency converter.
- *Air stream horizontal and Bird quard grille standard included.
- *Products are fully ATEX certified. Exproof Protection Class: EX IIG IIC T6.
- *Standard production class is EX IIG IIC T4.
- *Suitable for outdoor use.

Technical details;



MODELS	DIMENSIONS (mm)			
	A	B	ØD	H
AIR HCT-R 35-2-4T	500	500	355	500
AIR HCT-R 40-2-4T	550	550	400	500
AIR HCT-R 45-2-4T	600	600	450	600
AIR HCT-R 63-2-4T	800	800	630	700
AIR HCT-R 71-2-4T	900	900	710	700
AIR HCT-R 80-2-4T	1000	1000	800	700
AIR HCT-R 90-2-4T	1100	1100	900	800
AIR HCT-R 100-2-4T	1200	1200	1000	800
AIR HCT-R 112-2-4T	1400	1400	1120	800
AIR HCT-R 125-2-4T	1450	1450	1250	1350

MODEL	PRODUCT CODE	Airflow (m ³ /h)	PWR (KW)	Sound (dBA)	Current (AMP)	Rotation (RPM)	VOLTAGE (V)	Weight (KG)
AIR HCT-R 31-2T-0,18	34001	3157	0,18	90	0,65	2785	380	45
AIR HCT-R 31-2T-0,25	34002	3740	0,25	91	0,70	2755	380	46
AIR HCT-R 35-2T-0,37	34003	4664	0,37	88	1,10	2760	380	48
AIR HCT-R 40-2T-0,55	34004	5962	0,55	96	1,45	2760	380	54
AIR HCT-R 40-2T-0,75	34005	7315	0,75	93	1,85	2800	380	57
AIR HCT-R 45-2T-0,75	34006	8459	0,75	100	1,85	2800	380	63
AIR HCT-R 45-2T-1,1	34007	12100	1,10	97	2,60	2790	380	66
AIR HCT-R 45-2T-1,5	34008	12100	1,50	96	3,25	2865	380	67
AIR HCT-R 45-2T-2,2	34009	14740	2,20	99	4,75	2875	380	69
AIR HCT-R 63-2T-2,2	34010	19800	2,20	102	4,75	2875	380	110
AIR HCT-R 63-2T-3	34011	22000	3,00	101	6,45	2875	380	117
AIR HCT-R 63-2T-4	34012	26070	4,00	101	7,50	2865	380	124
AIR HCT-R 71-2T-5,5	34013	33880	5,50	104	9,80	2890	380	130
AIR HCT-R 71-2T-7,5	34014	39270	7,50	105	13,60	2910	380	134
AIR HCT-R 71-2T-11	34015	45650	11,00	106	19,50	2945	380	140
AIR HCT-R 35-4T-0,12	34016	3729	0,12	76	0,65	1380	380	46
AIR HCT-R 40-4T-0,18	34017	5181	0,18	78	0,75	1330	380	51
AIR HCT-R 40-4T-0,25	34018	5544	0,25	81	1,05	1320	380	52
AIR HCT-R 45-4T-0,37	34019	7766	0,37	85	1,35	1425	380	57
AIR HCT-R 45-4T-0,55	34020	8822	0,55	84	1,50	1690	380	58
AIR HCT-R 63-4T-1,1	34021	15290	1,10	90	2,80	1705	380	110
AIR HCT-R 63-4T-1,5	34022	20350	1,50	91	3,55	1700	380	112
AIR HCT-R 63-4T-2,2	34023	22990	2,20	94	4,90	1715	380	119
AIR HCT-R 71-4T-3	34024	29590	3,00	96	7,70	1710	380	128
AIR HCT-R 71-4T-4	34025	32340	4,00	98	8,50	1735	380	132
AIR HCT-R 80-4T-3	34026	35200	3,00	96	6,60	1435	380	146
AIR HCT-R 80-4T-4	34027	40040	4,00	98	8,20	1455	380	150
AIR HCT-R 80-4T-5,5	34028	43120	5,50	100	11,20	1465	380	162
AIR HCT-R 90-4T-3	34029	38500	3,00	101	6,60	1435	380	178
AIR HCT-R 90-4T-4	34030	45320	4,00	101	8,20	1455	380	180
AIR HCT-R 90-4T-5,5	34031	47410	5,50	100	11,20	1465	380	184
AIR HCT-R 90-4T-7,5	34032	55110	7,50	106	15,40	1465	380	194
AIR HCT-R 100-4T-5,5	34033	55330	5,50	102	11,20	1465	380	198
AIR HCT-R 100-4T-7,5	34034	62480	7,50	104	15,40	1465	380	208
AIR HCT-R 112-4T-5,5	34035	59070	5,50	107	11,20	1465	380	237
AIR HCT-R 112-4T-7,5	34036	75680	7,50	105	15,40	1465	380	249

ACCESSORIES



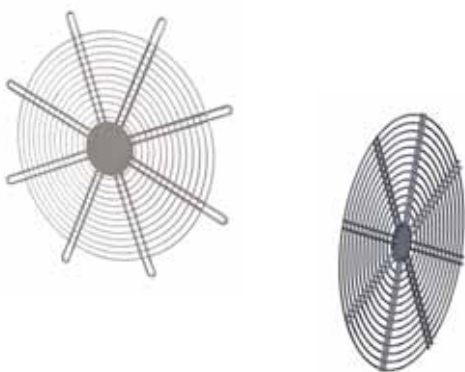
SILENCER

*The purpose of use is to reduce the air and engine noise level produced by the product during application.

*Compatible products, AKD, AIR AKD, ACD-Y, AIR Applicable for AKD-R, RCD-Y, RCD-D products.

*Depending on the product used, min. It has 5mm - max 10mm glass or rock wool insulation material.

*Standard production podless type mufflers

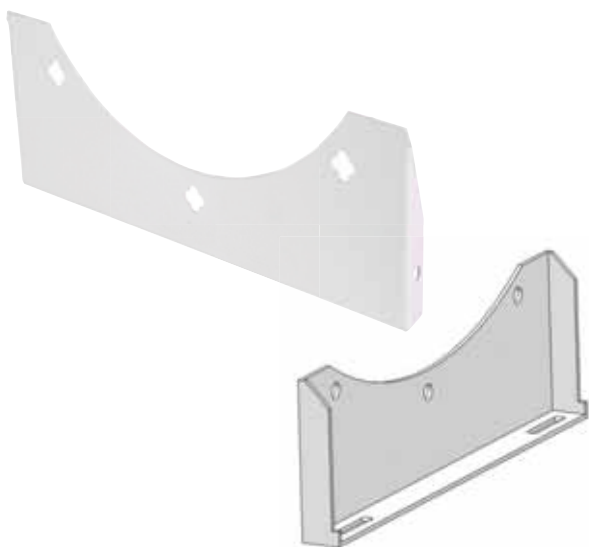


PROTECTION GUARD

* It is used for the purpose of preventing other objects from entering into the products.

*For compatible products, AKD, AIR AKD, AIR HCT, AWD, AQD, AIR AKD-W, AIR HC, ACD-Y, AIR AKD-R, AIR HCT-R products applicable.

*AWD, AQD, AIR HCT-R, AIR HC, ACD-Y, AIR AKD-R, AIR AJD, It is included as standard on AIR HCT-R products.



SUPPORT STANDS

*The purpose of use is to make the products stand still in the standing position and facilitate flat surface mounting. Applicable for compatible products, AKD, AIR AKD, AIR HCT products.

ACCESSORIES



COUPLING FLANGE

*The purpose of use is the intermediate element used to mount the products to the duct or another product.

*Compatible products can be applied for AKD, AIR AKD, AIR HCT products. It fits perfectly with the flange of the fan used.



OUTLET NOZZLE

*The purpose of use is to balance the amount of air blown by the device and to blow it over longer distances.

*Applicable for compatible products, AKD, AIR AKD, AIR HCT products.



SUCTION/OUTPUT NOZZLE

* It is used to increase the tension of the sucked air and to increase the amount of air drawn by the device.

*Applicable for compatible products, AKD, AIR AKD, AIR HCT products.



SPEED CONTROLLER

*The purpose of use is to ensure that products with a single-phase motor structure operate at desired speeds.

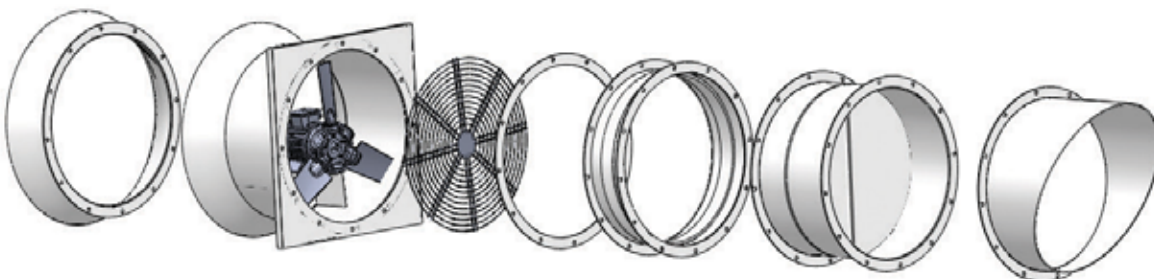
*Applicable for compatible products, WK, TT, QUITLINE, WOKS, WD II products.



VIBRATION WEDGE

*It is used to prevent the vibration that may occur during the operation of the products. It is generally used with mounting feet for products made on uneven floors.

*Applicable for compatible products, AKD, AIR AKD, AIR HCT products.



BOARDS

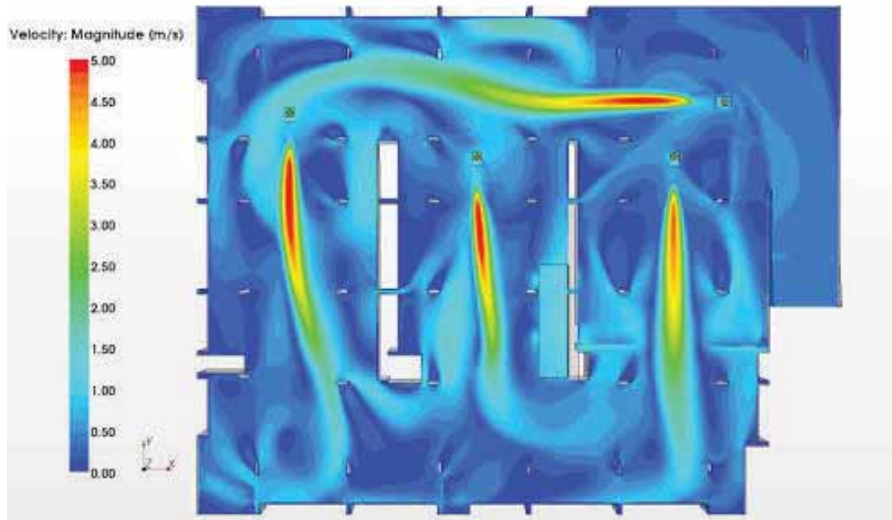
SYSTEM CONTROL PANEL AND AUTOMATION SYSTEMS

The control panel is a PLC (Programmable Logic Card) that all mechanical devices in the system (axial fans, jet fans, air/ smoke dampers, doors, etc.) contain according to the signals coming from each carbon monoxide detection system or fire/ smoke detection system that analyzes the situation in the parking lot. a is responsible for operating in accordance with the ventilation scenarios processed.

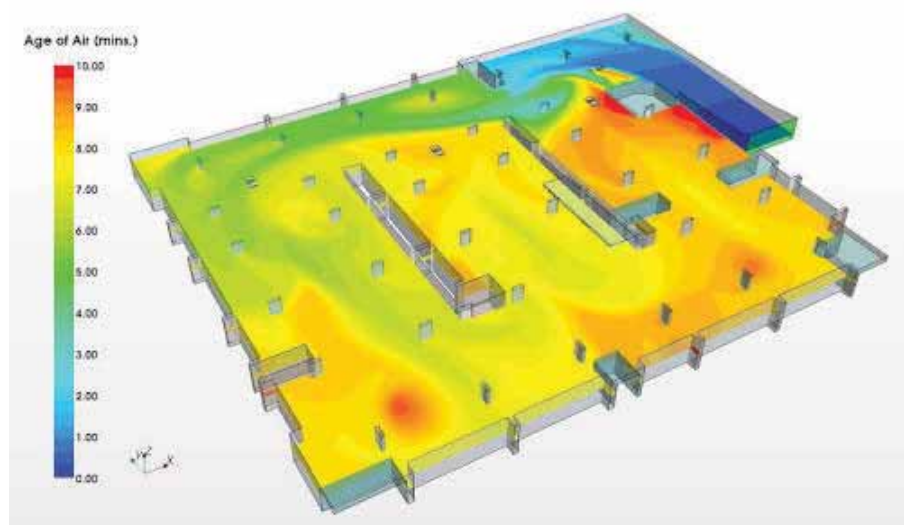


CFD (Computational Fluid Dynamics)

Cold Flow Analysis Smoke Propagation Analysis



Example 1



Example 2

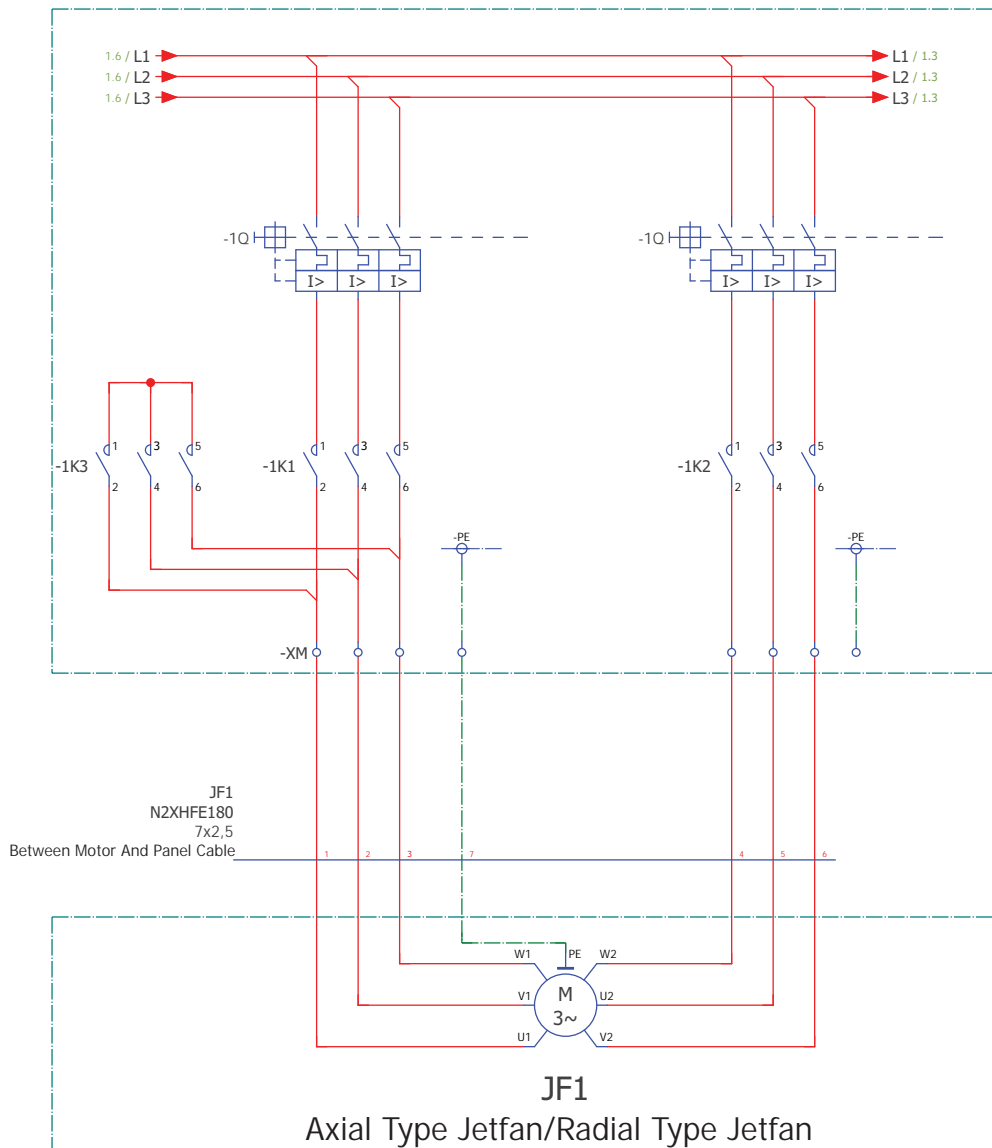
The performance of the system is done with the help of “Cold Smoke Tests” in the system that has completed the design phase and has reached the commissioning state. In the test, the evacuation of smoke is observed by using smoke tablets and smoke machines.

However, in case of failure of the system, a problem such as observing the design from the beginning may be encountered. In this respect, it would be a better choice to simulate this test in real life during the design phase. While interpreting the cold flow analysis results, we look for the suitability of the following criteria in order to evaluate the performance of the system;

- Suitability of jet fans to the main flow area
- Suitability of shaft locations
- Preventing returns as much as possible
- No dead volume
- Whether the smoke is diluted according to the displacement (Whether the toxic effect falls in places far from the fire point, the smoke is toxic from 100 ppm.)
- View angle values

DUAL SPEED JETFAN ELECTRICAL DIAGRAM

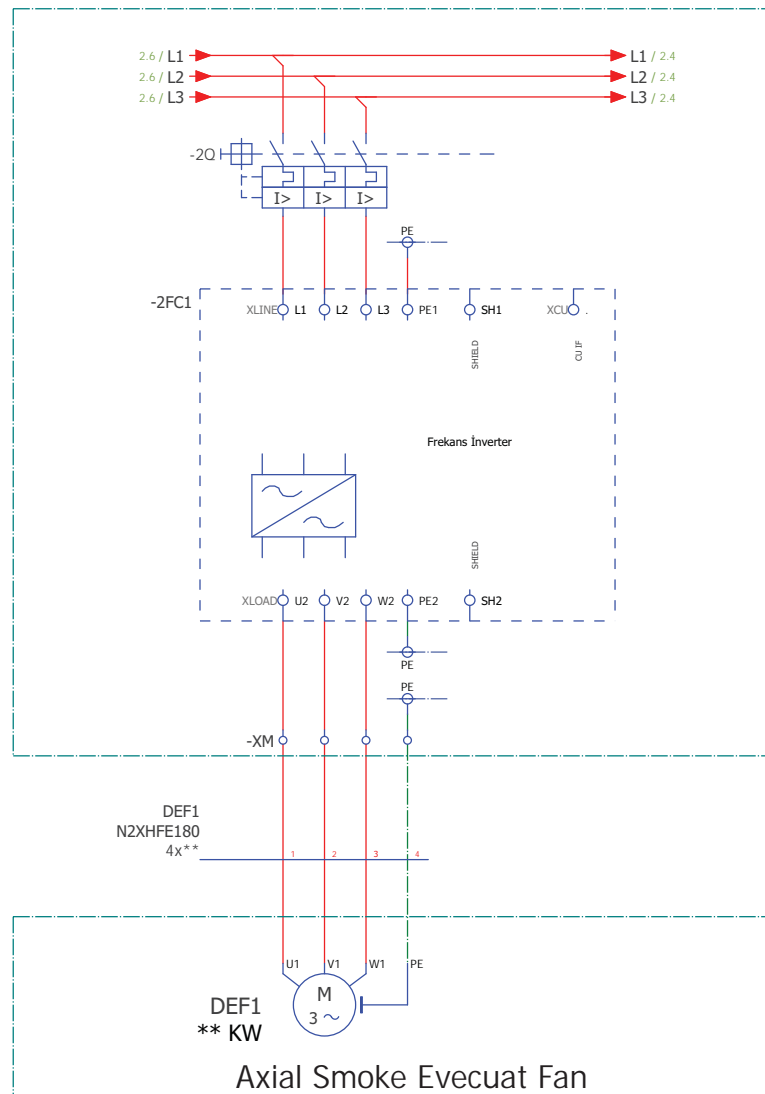
MCC BOARD



MOTOR CONNECTION

380VAC SUPPLY AXIAL FAN ELECTRICAL DIAGRAM

MCC BOARD



MOTOR CONNECTION

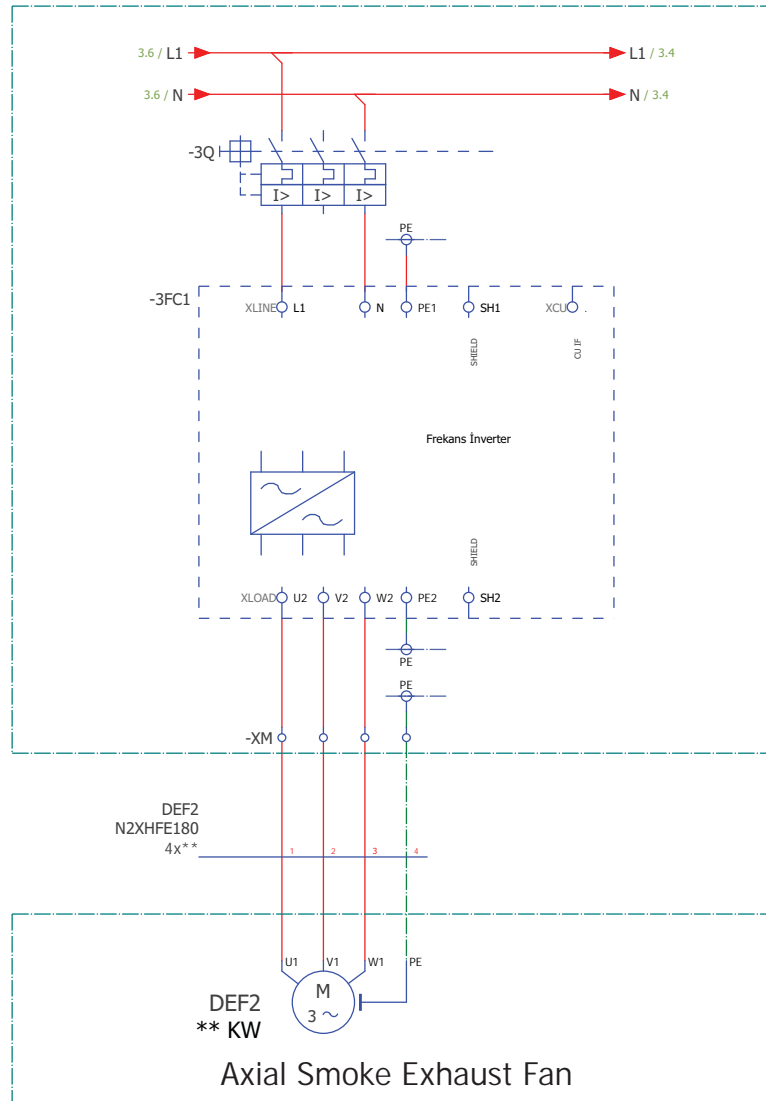
--NOTES--

In this Diagram, since the Input Supply voltage is 3 Phase,
Motor Connection Type should be changed to 3 Phas(380VAC)

Star or Delta depending on the connection type.

220VAC SUPPLY AXIAL FAN ELECTRICAL DIAGRAM

MCC BOARD



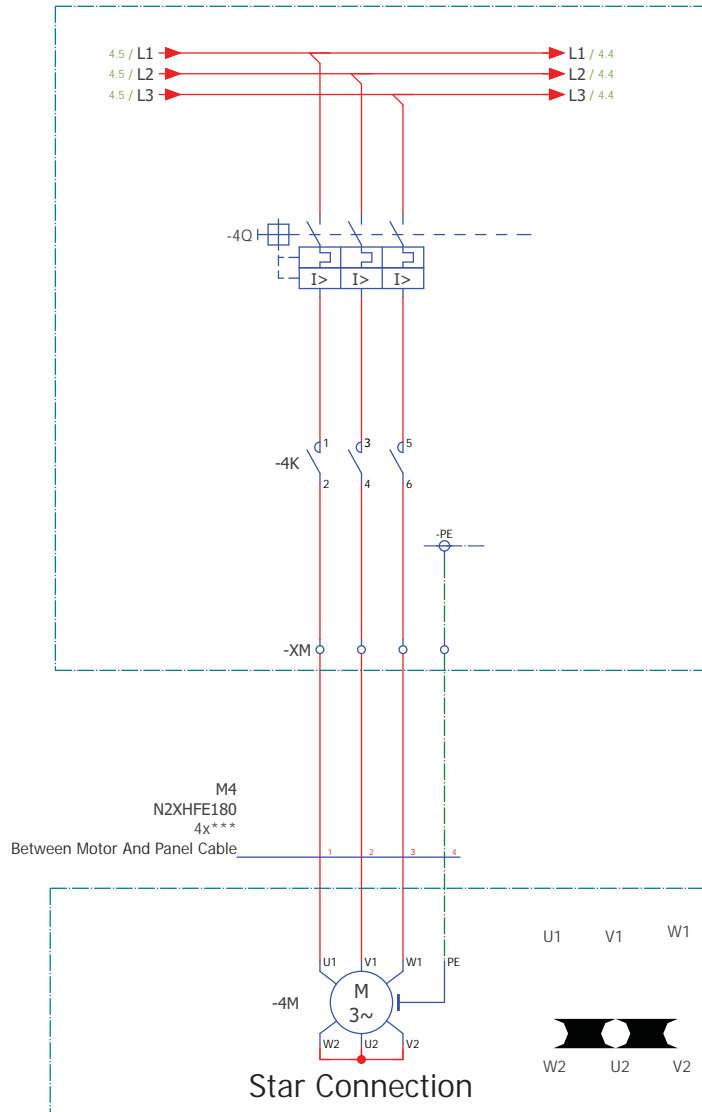
MOTOR CONNECTION BOX

--NOTES--

In this Diagram, since the Input Supply voltage is 1 Phase, Motor Connection Type should be changed to 1 Phase (220VAC) as Star or Delta depending on the connection type.

380VAC SUPPLY STAR CONNECTION MOTOR CONNECTION DIAGRAM

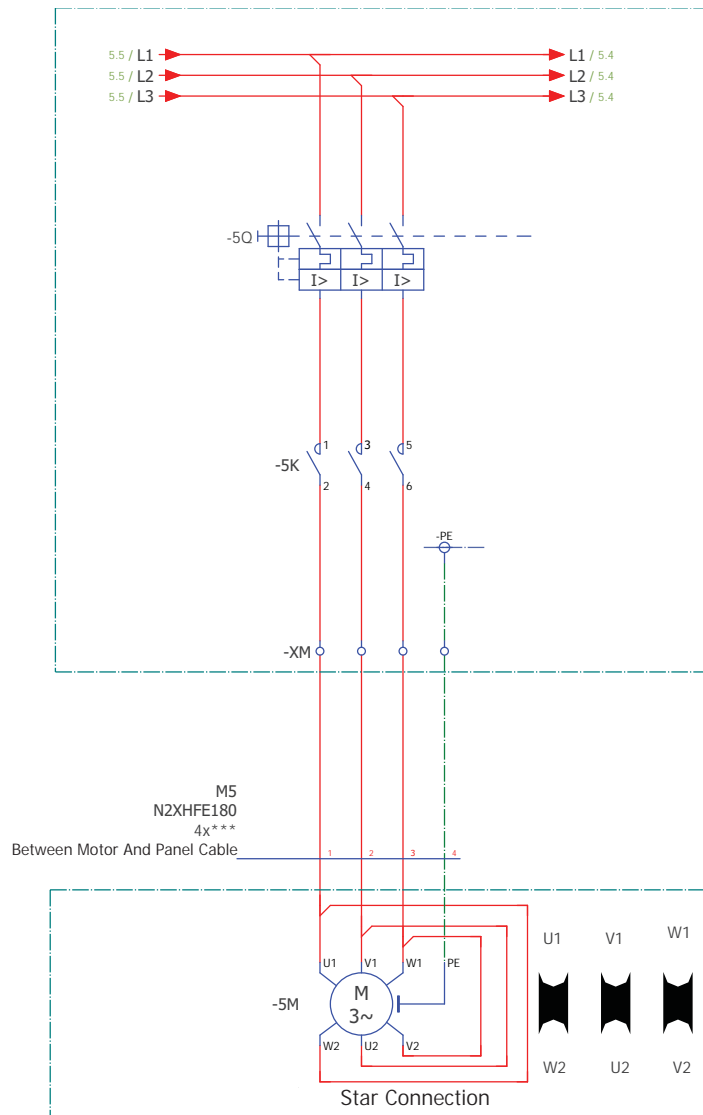
MCC BOARD



MOTOR CONNECTION BOX

380VAC SUPPLY TRIANGLE CONNECTION MOTOR CONNECTION DIAGRAM

MCC BOARD



MOTOR CONNECTION BOX



**PRODEK ENDÜSTRİYEL FAN SİSTEMLERİ
SAN. VE TİC. LTD. ŞTİ.**

FACTORY

Selvilitepe Osb Mahallesi, Turgutlu 1. OSB 1923 Sk. No:3
Turgutlu/ MANİSA

T: +90 236 312 49 65, +90 236 312 49 75 F: 0236 314 52 59
fabrika@prodeksan.com

İSTANBUL OFFICE

Esentepe Mahallesi, Milangaz Caddesi
Monumento Plaza Kat:14 No:123

Kartal / İSTANBUL
T: 0216 504 1044

satis@prodeksan.com
www.prodeksan.com